

RETAILERS GUIDE
NO PRICING

NEW!



NEW!



NEW!



NEW!



John
BOOS
Since 1887

FOODSERVICE EQUIPMENT

No Modifications To Flyer Products



SPRFSF0215

Mobile Handwash Sink

- 16GA Stainless Steel Top & Panels
- 20GA Stainless Steel Hinged Door w/Magnetic Catches
- Marine Inverted "V" Front Edge
- 8" Rear Risers & Side Splashes
- Drop-In Sink
- Deck Mount Faucet 4" O.C.
- Soap and Paper Towel Dispenser
- Heavy Duty 5" Locking Casters
- Shurflo Fresh Water Pump
- Ariston GL2.5 Water Heater
- CPS 5 GAL Clean Water Container
- CPS 6 GAL Grey Water Container
- GFI Outlet With 8 Foot Cord
- All Components are UL Listed



Model #	Sink Bowl Size (L x W x D)	Length	Width	Overall Work Height
MHS-2624	10" x 14" x 5"	26"	24"	36"

Underbar Dump Sink w/Soap & Towel Dispenser

- 18GA Stainless Steel
- Stainless Steel Scrap Basket
- Soap & Paper Towel Dispenser
- GALV Legs & Bracing



Slim-Line 18" Width

Model #	Length	Width
EUBDS-1218STD	12"	18"
EUBDS-1518STD	15"	18"

Standard 21" Width

Model #	Length	Width
EUBDS-1221STD	12"	21"
EUBDS-1521STD	15"	21"

Underbar Corner Drain Board

- 18GA 300 Series Stainless Steel
- GALV Legs & Bracing w/Adj Bullet Feet
- Stamped Ribbed Drain Boards
- 30" Working Height
- Corner Drain Board
- **Set of 4 Stainless Steel Legs Also Available (Bracing Not Included) SS-4LEG17.**



Model #	Length	Width
EUBD-2121-C	21"	21"

16GA - 3 Compartment Sink w/20" Drain Boards



- 16 Gauge 300 Series Stainless Steel Bowl And Deck
- 3 Compartment Sink
- 20" Drain Boards (LH and RH)
- Stainless Steel Legs And Adjustable Bullet Feet
- Includes Front To Back Adj Stainless Steel Bracing

Model #	Sink Size (L x W x D)	Length	Width
3PB2028-2D20	20" x 28" x 12"	103-1/4"	33-1/2"



Ergonomic Adjustable LIFT Tables - STAINLESS STEEL

- 16GA Stainless Steel Top
- Fixed Stainless Steel Undershelf
- Hydraulic Lift System
- 32" - 40" Adjustable Table Height
- 8" Stroke Lift System Cylinders
- Hand Crank Height Adjustment
- Foldable Hand Crank When Not In Use.
- Adjustable Floor Glides



Foldable Hand Crank



Foldable Hand Crank

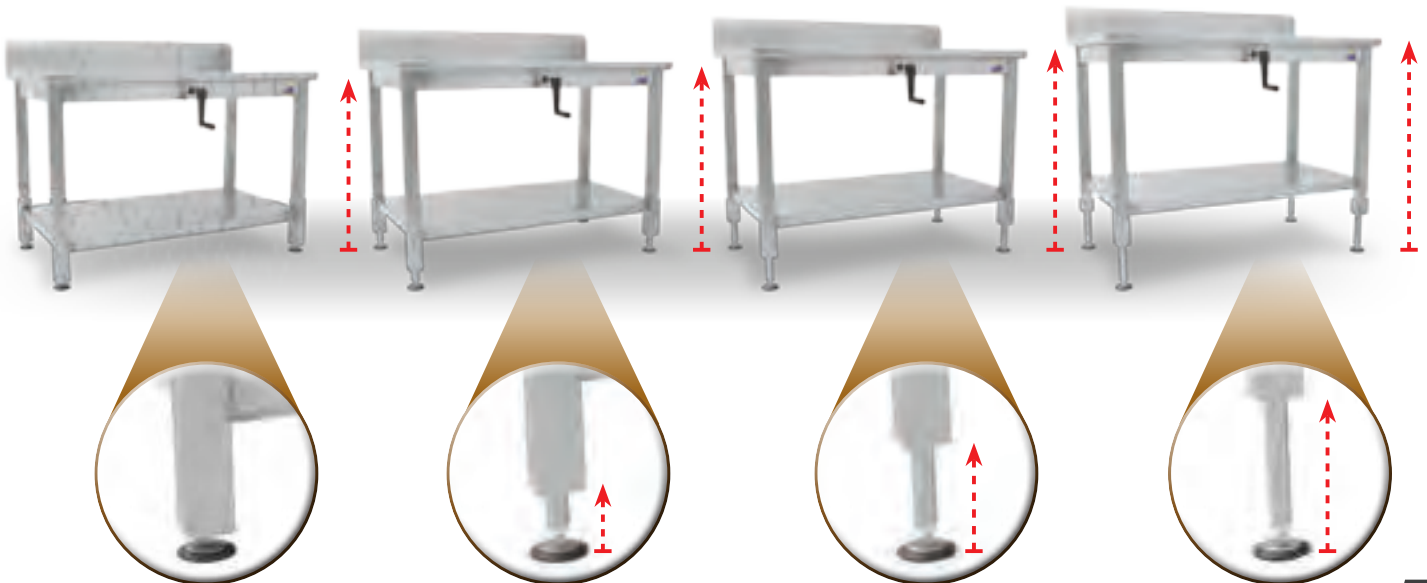
Flat Top Hydraulic Lift Tables w/Lower Shelf

Model #	Length	Width
LT6-3048SSW	48"	30"
LT6-3060SSW	60"	30"
LT6-3072SSW	72"	30"

5" Riser Top Hydraulic Lift Tables w/Lower Shelf

Model #	Length	Width
LT6R5-3048SSW	48"	30"
LT6R5-3060SSW	60"	30"
LT6R5-3072SSW	72"	30"

Adjustable Table Height Is Just A Crank Away!



UL LISTED - Custom Built Foodservice Equipment



John Boos & Co. is now UL Listed for Custom Built Foodservice Equipment in the United States and Canada. With the capacity to fabricate and wire Custom Built Foodservice Equipment, we are strongly dedicated in working with our customers in designing value added product with food safety in mind from production to consumption. Our custom fabricated equipment has gone through rigorous testing, inspections, and validation as required to be approved to bare the UL Listed certification logo.

John Boos & Co. UL Listed Chef's Counter is the product highlight of our certification. All of our UL Listed product is designed and fabricated so that the units can be easily disassembled and reassembled to fit any job site. We offer these UL Chef's Counters in unlimited shapes and sizes to fit your custom needs and include 3-D CAD drawings to insure your product is fabricated to your final approvals. Our customers also have the personal option of choosing their own preferred UL Listed Equipment to be installed. (Note: All equipment supplied by the customer must be UL Listed before installation.) Our UL Listed Counter's are available in single or three phase electrical service. There is a 1 year manufacture warranty on the complete Chef's Counter. For more information and inquiries, call Toll Free: (888) 431-2667 or email sales@johnboos.com.

Product Highlights: UL Listed - Chef's Counter

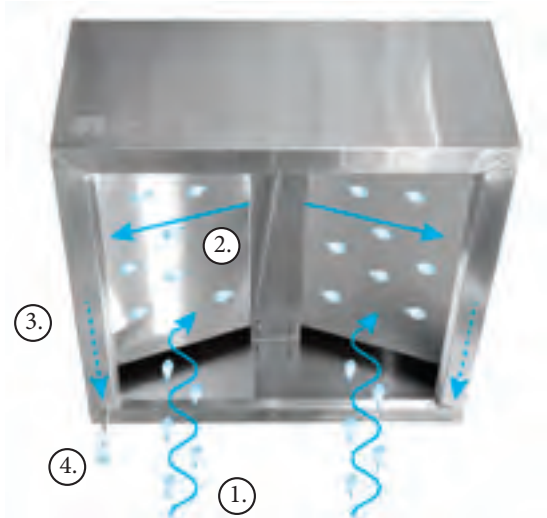
- UL LISTED CUSTOM FABRICATION
- SINGLE & THREE PHASE ELECTRICAL SERVICE AVAILABLE
- LIMITLESS SIZES AND CONFIGURATIONS AVAILABLE
- INSTALLATION OF CUSTOMER SUPPLIED EQUIPMENT INCLUDED
- 3-D DRAWINGS INCLUDED FOR CUSTOMER APPROVALS
- 14GA STAINLESS STEEL TOP (GA PREFERENCE AVAIL)
- 16GA STAINLESS STEEL DOUBLE OVERSHELF (GA PREFERENCE AVAIL)
- 18GA STAINLESS STEEL CABINET BASE (GA PREFERENCE AVAIL)
- 100 AMP SINGLE PHASE SERVICE PANEL
- 240 VOLT NEMA6-20P GFI OUTLET
- 120 VOLT GFI OUTLET
- CUSTOM HEATED CABINET



Request A Custom Quote!
Email: quotes@johnboos.com

CONDENSATION HOOD FUNCTIONALITY

1. CONDENSATION RISES
2. HITS INNER BAFFLE
3. DRIPS ONTO GUTTER
4. EXITS THROUGH REAR DRAIN TUBE



Ventless Condensate Hoods

- 18GA Stainless Steel
- Full Perimeter Gutter
- Removable Condensate Baffle
- Rear Drain Tube
- Welded Hanging Brackets

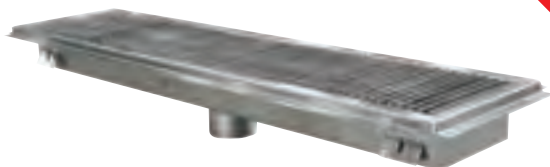
Note: Check local codes for approval.

Model #	Length	Width
C2HB-42-2	42"	42"

Condensate Hoods

- 18GA Stainless Steel Construction
- Full Perimeter Gutter
- Starting Exhaust Duct Collar
- Welded Hanging Brackets

Model #	Length	Width
C2H-36-2	36"	36"
C2H-42-2	42"	42"
C2H-60-2	60"	42"



Floor Troughs

- 14GA 300 Series Construction With Mounting Flange
- Removable 3/16" x 1" Stainless Steel Flatbar Subway Grate
- 4" Round Stainless Steel No-Hub Pipe Connection

★ Ships Within 10 Business Days!

Model #	Length	Width
FTSG-1224	24"	12"
FTSG-1236	36"	12"
FTSG-1248	48"	12"
FTSG-1260	60"	12"
FTSG-1824	24"	18"





Slim-Line Underbar Sinks

- 18GA 300 Series Stainless Steel
- 10" x 14" x 10" Deep Bowls With Corner Drains
- Bowls Are Fabricated, Not Deep Drawn
- Raised Ribbed Drain Boards
- Raised Marine Edge On Front And Sides
- GALV Legs & Bracing w/Adj Bullet Feet
- Economy 4" Splash Mount Faucet w/10" Spout (PBF-W2-10LF) And Overflow Stand Pipes (PB-OVF-BS) Included

Slim-Line Underbar Sinks - Galvanized Legs - Front To Back Adjustable Bracing

Model #	2 Compartment: Bowl Size (L x W x D)	Drain Board Size	Length	Width
EUB2S36SL-1RD/1LD	2 - 10" x 14" x 10" (LH or RH Drain Board)	(1) - 11"	36"	18"
EUB2S48SL-1RD/1LD	2 - 10" x 14" x 10" (LH or RH Drain Board)	(1) - 22-1/4"	48"	18"
EUB2S48SL-2D	2 - 10" x 14" x 10" (LH & RH Drain Board)	(2) - 11-1/2"	48"	18"
Model #	3 Compartment: Bowl Size (L x W x D)	Drain Board Size	Length	Width
EUB3S40SL	3 - 10" x 14" x 10"	N/A	40"	18"
EUB3S48SL-1RD/1LD	3 - 10" x 14" x 10" (LH or RH Drain Board)	(1) - 11-7/8"	48"	18"
EUB3S60SL-1RD/1LD	3 - 10" x 14" x 10" (LH or RH Drain Board)	(1) - 23-7/8"	60"	18"
EUB3S60SL-2D	3 - 10" x 14" x 10" (LH & RH Drain Board)	(2) - 11-3/4"	60"	18"
EUB3S72SL-2D	3 - 10" x 14" x 10" (LH & RH Drain Board)	(2) - 17-1/4"	72"	18"
EUB3S84SL-2D	3 - 10" x 14" x 10" (LH & RH Drain Board)	(2) - 23-1/4"	84"	18"
EUB3S96SL-2D	3 - 10" x 14" x 10" (LH & RH Drain Board)	(2) - 29-1/4"	96"	18"
Model #	4 Compartment: Bowl Size (L x W x D)	Drain Board Size	Length	Width
EUB4S72SL-2D	4 - 10" x 14" x 10" (LH & RH Drain Board)	(2) - 12"	72"	18"
EUB4S84SL-2D	4 - 10" x 14" x 10" (LH & RH Drain Board)	(2) - 18"	84"	18"
EUB4S96SL-2D	4 - 10" x 14" x 10" (LH & RH Drain Board)	(2) - 24"	96"	18"

Slim-Line 4 Step Liquor Display

- 18GA 300 Series Stainless Steel
- 4 Step Liquor Display
- GALV Legs & Bracing w/Adj Bullet Feet



Slim-Line 18" Width

Model #	Length	Width
EUBLD-1218	12"	18"
EUBLD-1818	18"	18"
EUBLD-2418	24"	18"

Slim-Line Underbar Drain Boards

- 18GA 300 Series Stainless Steel
- GALV Legs & Bracing w/Adj Bullet Feet
- Stamped Ribbed Drain Boards
- 30" Working Height



EUBD-1818

Model #	Length	Width
EUBD-1218	12"	18"
EUBD-1818	18"	18"
EUBD-2418	24"	18"
EUBD-3018	30"	18"
EUBD-3618	36"	18"
EUBD-4818	48"	18"

Glass Rack Dollies

- Aluminum Construction
- 3" Plate Casters
- Glass Racks Not Included



Model #	Length	Width
D2020-GT	21"	21"

Sheet Pan Dollies

- Aluminum Construction
- 3" Plate Casters
- Push Handle
- Sheet Pans Not Included



Model #	Length	Width
D1927-SP-H	27"	19"

Slim-Line Insulated Ice Bin w/ Cold Plate

Cold Plate

- Stainless Steel Circuits In Solid Aluminum Plate
- Available In 7-Circuit And 10-Circuit Cold Plate

Underbar Ice Bin

- 18GA 300 Series Stainless Steel
- Insulated Ice Bin 12" Deep w/Drain
- GALV Legs & Bracing w/Adj Bullet Feet



Cold Plate Top View

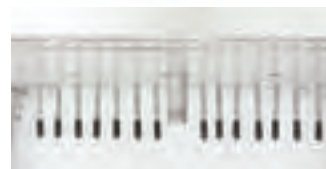


Ice Bin With 7-Circuit Cold Plate

Model #	Description	Length	Width
EUBIB-2418CP7	7-Circuit Cold Plate	24"	18"
EUBIB-3018CP7	7-Circuit Cold Plate	30"	18"
EUBIB-3618CP7	7-Circuit Cold Plate	36"	18"
EUBIB-4818CP7	7-Circuit Cold Plate	48"	18"

Ice Bin With 10-Circuit Cold Plate (Premium Model)

Model #	Description	Length	Width
EUBIB-3018CP10	10-Circuit Cold Plate	30"	18"
EUBIB-3618CP10	10-Circuit Cold Plate	36"	18"
EUBIB-4818CP10	10-Circuit Cold Plate	48"	18"



Slim-Line Underbar Ice Bins



- 18GA 300 Series Stainless Steel
- Insulated Ice Bin 12" Deep w/Drain
- GALV Legs & Bracing w/Adj Bullet Feet
- 30" Working Height
- Set of 4 Stainless Steel Legs Also Available (Bracing Not Included) SS-4LEG17.

Model #	Length	Width
EUBIB-2418	24"	18"
EUBIB-3018	30"	18"
EUBIB-3618	36"	18"
EUBIB-4818	48"	18"



EUBIB-2418

Slim-Line Underbar Blender Station/Dump Sink

- 18GA 300 Series Stainless Steel
- GALV Legs & Bracing w/Adj Bullet Feet
- 30" Working Height
- Set of 4 Stainless Steel Legs Also Available (Bracing Not Included) SS-4LEG17:

Blender Station - Fab Sink Bowl: 14" x 10" x 6"

Model #	Length	Width
EUBBS-1410-SL	24"	18"

Dump Sink - Fab Sink Bowl: 10" x 14" x 6"

Model #	Length	Width
EUBDS-1014-SL	14"	18"



EUBLD-1218



SPRFSF0215



EUBIB-2421CP7



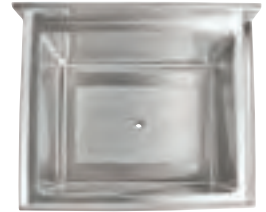
Underbar Insulated Ice Bin With Cold Plate

Cold Plate

- Stainless Steel Circuits In Solid Aluminum Plate
- Available In 7-Circuit And 10-Circuit Cold Plate

Underbar Ice Bin

- 18GA 300 Series Stainless Steel
- Insulated Ice Bin 12" Deep w/Drain
- GALV Legs & Bracing w/Adj Bullet Feet
- **Set of 4 Stainless Steel Legs Also Available (Bracing Not Included) SS-4LEG17.**



Cold Plate Top View

Ice Bin With 7-Circuit Cold Plate

Model #	Description	Length	Width
EUBIB-2421CP7	7-Circuit Cold Plate	24"	21"
EUBIB-3021CP7	7-Circuit Cold Plate	30"	21"
EUBIB-3621CP7	7-Circuit Cold Plate	36"	21"
EUBIB-4821CP7	7-Circuit Cold Plate	48"	21"



Ice Bin With 10-Circuit Cold Plate (Premium Model)

Model #	Description	Length	Width
EUBIB-3021CP10	10-Circuit Cold Plate	30"	21"
EUBIB-3621CP10	10-Circuit Cold Plate	36"	21"
EUBIB-4821CP10	10-Circuit Cold Plate	48"	21"

Underbar Ice Bins

- 18GA 300 Series Stainless Steel
- Insulated Ice Bin 12" Deep w/Drain
- GALV Legs & Bracing w/Adj Bullet Feet
- 30" Working Height
- **Set of 4 Stainless Steel Legs Also Available (Bracing Not Included) SS-4LEG17.**

NOTE: Underbar Speed Rail Not Included



EUBIB-12-2421

Model #	Length	Width
EUBIB-12-2421	24"	21"
EUBIB-12-3021	30"	21"
EUBIB-12-3621	36"	21"
EUBIB-12-4821	48"	21"

Underbar Ice Bins Lids

- 18GA 300 Series Stainless Steel
- Designed to fit EUBIB Ice Bins Only. (Note: Will not fit Ice Bins With Cold Plate.)



IBLD-2421

Model #	Length	Width
IBLD-2421	24"	21"
IBLD-3021	30"	21"
IBLD-3621	36"	21"
IBLD-4821	48"	21"

Single Underbar Speed Rails

- 18 GA 300 Series Stainless Steel
- 4" Tall x 4" Width



EUBSR-30

Model #	Length
EUBSR-24	24"
EUBSR-30	30"
EUBSR-36	36"
EUBSR-48	48"

Double Underbar Speed Rails

- 18 GA Series Stainless Steel



Model #	Length
EUBSR-2-24	24"
EUBSR-2-30	30"
EUBSR-2-36	36"
EUBSR-2-48	48"

Underbar Drain Boards

- 18GA 300 Series Stainless Steel
- GALV Legs & Bracing w/Adj Bullet Feet
- Stamped Ribbed Drain Boards
- 30" Working Height
- **Set of 4 Stainless Steel Legs Also Available (Bracing Not Included) SS-4LEG17.**



Underbar Corner Drain Board

- 18GA 300 Series Stainless Steel
- GALV Legs & Bracing w/Adj Bullet Feet
- Stamped Ribbed Drain Boards
- 30" Working Height
- Corner Drain Board
- **Set of 4 Stainless Steel Legs Also Available (Bracing Not Included) SS-4LEG17.**



Model #	Length	Width
EUBD-1221	12"	21"
EUBD-1821	18"	21"
EUBD-2421	24"	21"
EUBD-3021	30"	21"
EUBD-3621	36"	21"
EUBD-4821	48"	21"

Model #	Length	Width
EUBD-2121-C	21"	21"

Underbar Blender Station/Dump Sink

- 18GA 300 Series Stainless Steel
- GALV Legs & Bracing w/Adj Bullet Feet
- 30" Working Height

Blender Station - Fab Sink Bowl: 14" x 10" x 6"

Model #	Length	Width
EUBBS-1410	18"	21"

- **Set of 4 Stainless Steel Legs Also Available (Bracing Not Included) SS-4LEG19:**

Dump Sink - Fab Sink Bowl: 10" x 14" x 6"

Model #	Length	Width
EUBDS-1014	14"	21"

- **Set of 4 Stainless Steel Legs Also Available (Bracing Not Included) SS-4LEG17:**



Boos® Stainless Steel Cleaner

All natural streak-free formula that produces a beautiful shine on appliances and all stainless steel surfaces. Cleans food residue, fingerprints, and kitchen grease. Safe for use in food handling environments. Breezy Citrus Orchard scent, fine mist.



Model #	Description
BSC-3	8oz Bottles - 3 Per Case
BSC-12	8oz Bottles - 12 Per Case

4 Step Liquor Display

- 18GA 300 Series Stainless Steel
- 4 Step Liquor Display
- GALV Legs & Bracing w/Adj Bullet Feet

Standard 21" Width

Model #	Length	Width
EUBLD-1221	12"	21"
EUBLD-1821	18"	21"
EUBLD-2421	24"	21"



Underbar Sinks

- 18GA 300 Series Stainless Steel
- 10" x 14" x 10" Deep Bowls With Corner Drains
- Bowls Are Fabricated, Not Deep Drawn
- Raised Ribbed Drain Boards
- Raised Marine Edge On Front And Sides
- GALV Legs & Bracing w/Adj Bullet Feet
- Economy 4" Faucet w/10" Spout (PBF-4-D-10LF) And Overflow Stand Pipes (PB-OVF-BS) Included

Set of 4 Stainless Steel Legs Also Available
(Bracing Not Included) SS-4LEG17:



Heavy Duty Bar Sink Faucet
PBF-4DM-10LF -



EUB3S72-2D

Bar Sinks - Galvanized Legs And Feet - Front To Back Adjustable Bracing

Model #	2 Compartment: Bowl Size (L x W x D)	Drain Board Size	Length	Width
EUB2S36-1RD/1LD	2 - 10" x 14" x 10" (LH or RH Drain Board)	(1) - 11"	36"	21"
EUB2S48-1RD/1LD	2 - 10" x 14" x 10" (LH or RH Drain Board)	(1) - 22-1/4"	48"	21"
EUB2S48-2D	2 - 10" x 14" x 10" (LH & RH Drain Board)	(2) - 11-1/2"	48"	21"
Model #	3 Compartment: Bowl Size (L x W x D)	Drain Board Size	Length	Width
EUB3S40	3 - 10" x 14" x 10"	N/A	40"	21"
EUB3S48-1RD/1LD	3 - 10" x 14" x 10" (LH or RH Drain Board)	(1) - 11-7/8"	48"	21"
EUB3S60-1RD/1LD	3 - 10" x 14" x 10" (LH or RH Drain Board)	(1) - 23-7/8"	60"	21"
EUB3S60-2D	3 - 10" x 14" x 10" (LH & RH Drain Board)	(2) - 11-3/4"	60"	21"
EUB3S72-2D	3 - 10" x 14" x 10" (LH & RH Drain Board)	(2) - 17-1/4"	72"	21"
EUB3S84-2D	3 - 10" x 14" x 10" (RH & LH Drain Board)	(2) - 23-1/4"	84"	21"
EUB3S96-2D	3 - 10" x 14" x 10" (RH & LH Drain Board)	(2) - 29-1/4"	96"	21"
Model #	4 Compartment: Bowl Size (L x W x D)	Drain Board Size	Length	Width
EUB4S72-2D	4 - 10" x 14" x 10" (LH & RH Drain Board)	(2) - 12"	72"	21"
EUB4S84-2D	4 - 10" x 14" x 10" (RH & LH Drain Board)	(2) - 18"	84"	21"
EUB4S96-2D	4 - 10" x 14" x 10" (RH & LH Drain Board)	(2) - 24"	96"	21"

Underbar Glass Rack Storage Cabinet

- 18GA 300 Series Stainless Steel
- Length: 24" Width: 21"
- Ribbed Drainboard Top w/Drain
- EUBGRS-24-2: Supplied w/One Solid Fixed Mid-Shelf
- EUBGRS-24-3: Supplied w/Fixed Rack Storage Angles
- Stainless Steel Legs & Adj Feet
- Glass Racks Not Included



Model #	Description
EUBGRS-24-2	2 - Shelf
EUBGRS-24-3	3 - Shelf



EUBGRS-24-2



EUBGRS-24-3



AUTOQUOTES

Janitor Cabinet With Mop Sink

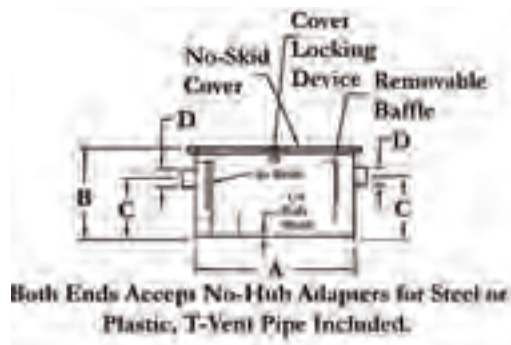
- 18GA Type 300 Stainless Steel With #4 Polish, Satin Finish
- All Exposed Hardware Is Tamper Proof
- Includes Overhead Shelf For Chemical Storage
- Two Swing Lockable Louvered Doors
- Oversized Mop Sink 24" X 24" X 12" Deep
- Bottoms Of Bowls Formed For Drainage To 3-1/2" Diameter Die Stamped Opening
- Includes (1) Heavy Duty Service Faucet
- 1 - 10" Section Of Hose
- Rear Mounted Mop Holder With 3 Locking Cams
- Mounting Location

Model #	Dimensions (L x W x H)
PBJC-303084	30-1/16" x 30-1/2" x 83-5/8"

Economy Dish Storage Cabinet

- 18GA 300 Series Stainless Steel
- Fixed Mid-Shelf

Model #	Length	Width
EDSC8-1548	48"	15"
EDSC8-1560	60"	15"
EDSC8-1572	72"	15"
EDSC8-1848	48"	18"
EDSC8-1860	60"	18"
EDSC8-1872	72"	18"



Carbon Steel Grease Interceptors

Model #	Size	Width	G.P.M Capacity (lbs)	Grease Capacity (lbs)	A	B	C	D
GT-8	8#	10.5"	4	8	14.2"	11.2"	7.5"	2"
GT-14	14#	13.5"	7	14	16.2"	18.3"	8.1"	2"
GT-20	20#	14.5"	10	20	20.1"	12.1"	8.1"	2"
GT-30	30#	16"	15	30	20.5"	13.8"	10.4"	2.5"
GT-40	40#	16"	20	40	22.5"	15"	11.5"	3"
GT-50	50#	17.5"	25	50	24.5"	16.5"	12"	3"
GT-70	70#	18"	35	70	28.5"	19.3"	14.1"	3.5"
GT-100	100#	22.25"	50	100	30.5"	21.5"	16.1"	4"



Single, Double and Multi Compartment Sinks - "B-Series" 16 GA

- 16GA 300 Series Stainless Steel Bowl And Deck
- Stainless Steel Legs And Adj Bullet Feet
- Includes Front To Back Adj Stainless Bracing
- Note: ******(Supplied with 2 Sets of Faucet Holes)



1B18244



1B18244-1D18L



1B18244-1D18R



1B18244-2D18

1 Compartment Sink - "B-Series" 16 GA

Model #	1 Compartment: Bowl Size (L x W x D)	Length	Width
1B16204	1 - 16" x 20" x 14"	21"	25-1/2"
1B16204-1D18L/1D18R	1 - 16" x 20" x 14" (18" LH or RH Drain Board)	38"	25-1/2"
1B16204-2D18	1 - 16" x 20" x 14" (18" LH & RH Drain Board)	55"	25-1/2"
1B184	1 - 18" x 18" x 14"	23"	23-1/2"
1B184-1D18L/1D18R	1 - 18" x 18" x 14" (18" LH or RH Drain Board)	40"	23-1/2"
1B184-2D18	1 - 18" x 18" x 14" (18" LH & RH Drain Board)	57"	23-1/2"
1B18244	1 - 18" x 24" x 14"	23"	29-1/2"
1B18244-1D18L/1D18R	1 - 18" x 24" x 14" (18" LH or RH Drain Board)	40"	29-1/2"
1B18244-2D18	1 - 18" x 24" x 14" (18" LH & RH Drain Board)	59"	29-1/2"
1B18244-1D24L/1D24R	1 - 18" x 24" x 14" (24" LH or RH Drain Board)	46"	29-1/2"
1B18244-2D24	1 - 18" x 24" x 14" (24" LH & RH Drain Board)	69"	29-1/2"
1B244	1 - 24" x 24" x 14"	29"	29-1/2"
1B244-1D24L/1D24R	1 - 24" x 24" x 14" (24" LH or RH Drain Board)	52"	29-1/2"
1B244-2D24	1 - 24" x 24" x 14" (24" LH & RH Drain Board)	75"	29-1/2"



2B18244



2B18244-1D18L



2B18244-1D18R



2B18244-2D18

2 Compartment Sinks - "B-Series" 16 GA

Model #	2 Compartment: Bowl Size (L x W x D)	Length	Width
2B16204	2 - 16" x 20" x 14"	37"	25-1/2"
2B16204-1D18L/1D18R	2 - 16" x 20" x 14" (18" LH or RH Drain Board)	54"	25-1/2"
2B16204-2D18	2 - 16" x 20" x 14" (18" LH & RH Drain Board)	71"	25-1/2"
2B184	2 - 18" x 18" x 14"	41"	23-1/2"
2B184-1D18L/1D18R	2 - 18" x 18" x 14" (18" LH or RH Drain Board)	58"	23-1/2"
2B184-2D18	2 - 18" x 18" x 14" (18" LH & RH Drain Board)	75"	23-1/2"
2B18244	2 - 18" x 24" x 14"	41"	29-1/2"
2B18244-1D18L/1D18R	2 - 18" x 24" x 14" (18" LH or RH Drain Board)	58"	29-1/2"
2B18244-2D18	2 - 18" x 24" x 14" (18" LH & RH Drain Board)	75"	29-1/2"
2B244	2 - 24" x 24" x 14"	53"	29-1/2"
2B244-1D24L/1D24R	2 - 24" x 24" x 14" (24" LH or RH Drain Board)	76"	29-1/2"
2B244-2D24	2 - 24" x 24" x 14" (24" LH & RH Drain Board)	99"	29-1/2"



3B18244



3B18244-1D18R



3B18244-1D18L



3B18244-2D18

3 Compartment Sinks - "B-Series" 16 GA

Model #	3 Compartment: Bowl Size (L x W x D)	Length	Width
3B14314-2D18	3 - 14" x 31" x 14" (18" LH & RH Drain Board)	81"	36-1/2"
3B16204	3 - 16" x 20" x 14"	53"	25-1/2"
3B16204-1D18L/1D18R	3 - 16" x 20" x 14" (18" LH or RH Drain Board)	70"	25-1/2"
3B16204-2D18	3 - 16" x 20" x 14" (18" LH & RH Drain Board)	87"	25-1/2"
3B16204-2D24	3 - 16" x 20" x 14" (24" LH & RH Drain Board)	99"	25-1/2"
3B16204-2D36	3 - 16" x 20" x 14" (36" LH & RH Drain Board)	123"	25-1/2"
3B184	3 - 18" x 18" x 14"	59"	23-1/2"
3B184-1D18L/1D18R	3 - 18" x 18" x 14" (18" LH or RH Drain Board)	76"	23-1/2"
3B184-2D18	3 - 18" x 18" x 14" (18" LH & RH Drain Board)	93"	23-1/2"
3B18244	3 - 18" x 24" x 14"	59"	29-1/2"
3B18244-1D18L/1D18R	3 - 18" x 24" x 14" (18" LH or RH Drain Board)	76"	29-1/2"
3B18244-2D18	3 - 18" x 24" x 14" (18" LH & RH Drain Board)	93"	29-1/2"
3B18244-2D24	3 - 18" x 24" x 14" (24" LH & RH Drain Board)	105"	29-1/2"
3B20304-2D20	3 - 20" x 30" x 14" (20" LH & RH Drain Board)	103"	35-1/2"
3B20304-2D24	3 - 20" x 30" x 14" (24" LH & RH Drain Board)	111"	35-1/2"
3B20304-2D30	3 - 20" x 30" x 14" (30" LH & RH Drain Board)	123"	35-1/2"
3B244 **	3 - 24" x 24" x 14"	77"	29-1/2"
3B244-1D24L/1D24R**	3 - 24" x 24" x 14" (24" LH or RH Drain Board)	100"	29-1/2"
3B244-2D24 **	3 - 24" x 24" x 14" (24" LH & RH Drain Board)	123"	29-1/2"



4B18244-2D18

4 Compartment Sinks - "B-Series" 16 GA

Model #	4 Compartment: Bowl Size (L x W x D)	Length	Width
4B18244-2D18 **	4 - 18" x 24" x 14" (18" LH & RH Drain Board)	111"	29-1/2"

Boos® Stainless Steel Cleaner

All natural streak-free formula that produces a beautiful shine on appliances and all stainless steel surfaces. Cleans food residue, fingerprints, and kitchen grease. Safe for use in food handling environments. Breezy Citrus Orchard scent, fine mist.



Model #	Description
BSC-3	8oz Bottles - 3 Per Case
BSC-12	8oz Bottles - 12 Per Case



Single, Double and Multi Compartment Sinks: "E-Series" 18 GA - 12" Deep Bowls

- 18GA 300 Series Stainless Steel Bowl And Deck
 - Galvanized Legs And Adj Plastic Bullet Feet
- Note: **** (Supplied with 2 Sets of Faucet Holes)**



E1S8-1620-12

12" Deep Bowl - 1 Compartment Sink - "E-Series" 18 GA

Model #	1 Compartment: Bowl Size (L x W x D)	Length	Width
E1S8-1620-12	1 - 16" x 20" x 12"	21"	25-1/2"
E1S8-1620-12L18/12R18	1 - 16" x 20" x 12" (18" LH or RH Drain Board)	36-1/2"	25-1/2"
E1S8-1620-12T18	1 - 16" x 20" x 12" (18" LH & RH Drain Board)	52"	25-1/2"
E1S8-18-12	1 - 18" x 18" x 12"	23"	23-1/2"
E1S8-18-12L18/12R18	1 - 18" x 18" x 12" (18" LH or RH Drain Board)	38-1/2"	23-1/2"
E1S8-18-12T18	1 - 18" x 18" x 12" (18" LH & RH Drain Board)	54"	23-1/2"

12" Deep Bowl - 2 Compartment Sinks - "E-Series" 18 GA

Model #	2 Compartment: Bowl Size (L x W x D)	Length	Width
E2S8-1620-12	2 - 16" x 20" x 12"	37"	25-1/2"
E2S8-1620-12L18/12R18	2 - 16" x 20" x 12" (18" LH or RH Drain Board)	52-1/2"	25-1/2"
E2S8-1620-12T18	2 - 16" x 20" x 12" (18" LH & RH Drain Board)	68"	25-1/2"
E2S8-18-12	2 - 18" x 18" x 12"	41"	23-1/2"
E2S8-18-12L18/12R18	2 - 18" x 18" x 12" (18" LH or RH Drain Board)	56-1/2"	23-1/2"
E2S8-18-12T18	2 - 18" x 18" x 12" (18" LH & RH Drain Board)	72"	23-1/2"



E2S8-18-12T18

12" Deep Bowl - 3 Compartment Sinks - "E-Series" 18 GA

Model #	3 Compartment: Bowl Size (L x W x D)	Length	Width
E3S8-1620-12	3 - 16" x 20" x 12"	53"	25-1/2"
E3S8-1620-12L18/12R18	3 - 16" x 20" x 12" (18" LH or RH Drain Board)	68-1/2"	25-1/2"
E3S8-1620-12T18	3 - 16" x 20" x 12" (18" LH & RH Drain Board)	84"	25-1/2"
E3S8-18-12	3 - 18" x 18" x 12"	59"	23-1/2"
E3S8-18-12L18/12R18	3 - 18" x 18" x 12" (18" LH or RH Drain Board)	74-1/2"	23-1/2"
E3S8-18-12T18	3 - 18" x 18" x 12" (18" LH & RH Drain Board)	90"	23-1/2"



E3S8-18-12T18

Multi Bowl Compartment Sinks - "E-Series" 18 GA

Model #	3 Compartment: Bowl Size (L x W x D)	Length	Width
E3S8-1014-10	3 - 10" x 14" x 10"	35"	19-1/2"
E3S8-1014-10L15/10R15	3 - 10" x 14" x 10" (15" LH or RH Drain Board)	49"	19-1/2"
E3S8-1014-10T15	3 - 10" x 14" x 10" (15" LH & RH Drain Board)	64"	19-1/2"
E3S8-1416-12T12	3 - 14" x 16" x 12" (12" LH & RH Drain Board)	66"	21-1/2"

Stainless Steel Legs & Feet

Model #	S/S Legs And Feet
SS-4LEG19	Set of 4 - 12" Deep Bowls
SS-4LEG17	Set of 4 - 14" Deep Bowls
SS-4LEG21	Set of 4 - 10" Deep Bowls



Leg Bracing Kits - "E-Series" 18 GA Sinks

Model #	Description
EBK-G14	GA Legs: 14" Bowls
EBK-G15	GA Legs: 15" Bowls
EBK-G16	GA Legs: 16" Bowls
EBK-G18	GA Legs: 18" Bowls
EBK-G20	GA Legs: 20" Bowls
EBK-G24	GA Legs: 24" Bowls
EBK-G30	GA Legs: 30" Bowls
EBK-S14	SS Legs: 14" Bowls
EBK-S15	SS Legs: 15" Bowls
EBK-S16	SS Legs: 16" Bowls
EBK-S18	SS Legs: 18" Bowls
EBK-S20	SS Legs: 20" Bowls
EBK-S24	SS Legs: 24" Bowls
EBK-S30	SS Legs: 30" Bowls



E1S8-1824-14



E1S8-1824-14L24



E1S8-1824-14R24



E1S8-1824-14T24

14" Deep Bowl - 1 Compartment Sink - "E-Series" 18 GA

Model #	1 Compartment: Bowl Size (L x W x D)	Length	Width
E1S8-1824-14	1 - 18" x 24" x 14"	23"	29-1/2"
E1S8-1824-14L24/14R24	1 - 18" x 24" x 14" (24" LH or RH Drain Board)	42"	29-1/2"
E1S8-1824-14T24	1 - 18" x 24" x 14" (24" LH & RH Drain Board)	66"	29-1/2"
E1S8-24-14	1 - 24" x 24" x 14"	29"	29-1/2"
E1S8-24-14L24/14R24	1 - 24" x 24" x 14" (24" LH or RH Drain Board)	50-1/2"	29-1/2"
E1S8-24-14T24	1 - 24" x 24" x 14" (24" LH & RH Drain Board)	72"	29-1/2"



E2S8-24-14



E2S8-24-14L24



E2S8-24-14R24



E2S8-24-14T24

14" Deep Bowl - 2 Compartment Sink - "E-Series" 18 GA

Model #	2 Compartment: Bowl Size (L x W x D)	Length	Width
E2S8-24-14	2 - 24" x 24" x 14"	53"	29-1/2"
E2S8-24-14L24/14R24	2 - 24" x 24" x 14" (24" LH or RH Drain Board)	74-1/2"	29-1/2"
E2S8-24-14T24	2 - 24" x 24" x 14" (24" LH & RH Drain Board)	96"	29-1/2"



E3S8-1824-14L24



E3S8-1824-14R24



E3S8-1824-14T24

14" Deep Bowl - 3 Compartment Sink - "E-Series" 18 GA

Model #	3 Compartment: Bowl Size (L x W x D)	Length	Width
E3S8-15-14	3 - 15" x 15" x 14"	50-1/2"	20-1/2"
E3S8-15-14L15/R15	3 - 15" x 15" x 14" (15" LH or RH Drain Board)	62-1/2"	20-1/2"
E3S8-15-14T15	3 - 15" x 15" x 14" (15" LH & RH Drain Board)	75"	20-1/2"
E3S8-18-14T18	3 - 18" x 18" x 14" (18" LH & RH Drain Board)	90"	23-1/2"
E3S8-18-14T24	3 - 18" x 18" x 14" (24" LH & RH Drain Board)	102"	23-1/2"
E3S8-1824-14L24/14R24	3 - 18" x 24" x 14" (24" LH or RH Drain Board)	80"	29-1/2"
E3S8-1824-14T24	3 - 18" x 24" x 14" (24" LH & RH Drain Board)	104"	29-1/2"
E3S8-24-14 **	3 - 24" x 24" x 14"	77"	29-1/2"
E3S8-24-14L24/14R24**	3 - 24" x 24" x 14" (24" LH or RH Drain Board)	98-1/2"	29-1/2"
E3S8-24-14T24 **	3 - 24" x 24" x 14" (24" LH & RH Drain Board)	120"	29-1/2"
E3S8-2030-14T24	3 - 20" x 30" x 14" (24" LH & RH Drain Board)	108"	35-1/2"

14" Deep Bowl - 4 Compartment Sink - "E-Series" 18 GA

Model #	4 Compartment: Bowl Size (L x W x D)	Length	Width
E4S8-1620-14T18 **	4 - 16" x 20" x 14" (18" LH & RH Drain Board)	100"	25-1/2"



SPRFSF0215



3BCS-184-2D18

Corner Sinks

- Stainless Steel Legs With Adjustable Bracing
- 14" Deep Fabricated Bowls



3 Bowl Corner Sink 16GA - "B-Series"

Model #	Bowl Size (L x W x D)	Length	Width
3BCS-184-2D18	18" x 18" x 14" (18" LH & RH Drain Board)	58-1/2"	23-1/2"

3 Bowl Corner Sink 18GA - "E-Series"

Model #	Bowl Size (L x W x D)	Length	Width
E3BCS-184-2D18	18" x 18" x 14" (18" LH & RH Drain Board)	58-1/2"	23-1/2"
E3BCS-244-2D24	24" x 24" x 14" (24" LH & RH Drain Board)	75"	29-1/2"

Detachable Drain Board
Sold Separately



B2S8-18-12

B1S8-18-14

B3S8-18-12

Budget Sinks

- 18GA 430 Stainless Steel Construction
- Galvanized Legs With Adj Plastic Bullet Feet
- Not NSF Approved

1 Bowl Budget Sink

Model #	Bowl Size (L x W x D)	Length	Width
B1S8-18-14	18" x 18" x 14"	21"	21-1/2"
B1S8-1821-14	18" x 21" x 14"	21"	24-1/2"
B1S8-24-14	24" x 24" x 14"	27"	27-1/2"

2 Bowl Budget Sink

Model #	Bowl Size (L x W x D)	Length	Width
B2S8-18-12	18" x 18" x 12"	36"	21-1/2"
B2S8-1821-12	18" x 21" x 12"	36"	24-1/2"
B2S8-24-12	24" x 24" x 12"	48"	27-1/2"

3 Bowl Budget Sink

Model #	Bowl Size (L x W x D)	Length	Width
B3S8-18-12	18" x 18" x 12"	54"	21-1/2"
B3S8-1821-12	18" x 21" x 12"	54"	24-1/2"
B3S8-24-12	24" x 24" x 12"	72"	27-1/2"

Detachable Drain Boards

- 18GA 430 Stainless Steel Construction
- To Be Used With Budget Sink
- Screws Mount To Sink Legs
- Easy To Assemble And Disassemble



Model #	Description
BDDS8-18	Drain Board For 18" x 18" Budget Sink
BDDS8-1821	Drain Board For 18" x 21" Budget Sink
BDDS8-24	Drain Board For 24" x 24" Budget Sink

Mobile Soak Sinks

- 16GA 300 Series Stainless Steel
- Marine Edge With Corner Bumpers
- Stainless Steel Legs w/ Locking Casters



Model #	Sink Size (L x W x D)
PB-SS-208	20" x 20" x 8", 20" Work Height, w/Twist Waste

Mop Sinks

- 16GA 300 Series Stainless Steel
- Available In 6" Or 12" Deep Bowls (Does not include faucet.)



EMS-2016-6



PBF-SS-6

Model #	Sink Size (L x W x D)	Length	Width
EMS-2016-6	20" x 16" x 6" 6" High Water Level	24-5/8"	19-1/8"
EMS-2016-12	20" x 16" x 12" 12" High Water Level	24-5/8"	19-1/8"

Model #	Description
PBF-SS-6	Service Faucet w/Vacuum Breaker

Economy Prep Worktables w/ Sink Bowl

- 18GA Stainless Steel Construction
- Optional Stainless Steel or Galvanized Legs and Undershelf
- Sink Bowl 16"x20"x10" deep
- Table Punched for 4" Deck Mount Faucet (Faucet Not Included)

Stainless Steel Legs & Undershelf

Model #	Sink Size (L x W x D)	Length	Width
EPT8R5-3060SSK-L/SSK-R	16" x 20" x 10" (LH or RH)	60"	30"
EPT8R5-3072SSK-L/SSK-R	16" x 20" x 10" (LH or RH)	72"	30"

Galvanized Legs & Undershelf

Model #	Sink Size (L x W x D)	Length	Width
EPT8R5-3060GSK-L/GSK-R	16" x 20" x 10" (LH or RH)	60"	30"
EPT8R5-3072GSK-L/GSK-R	16" x 20" x 10" (LH or RH)	72"	30"



EPT8R5-3060SSK-R

Prep Tables w/Sink Bowl

- 16GA 300 Series Stainless Steel
- Includes 4" Deckmount Faucet And 10" Spout (PBF-4DM-10LF)
- Adjustable Undershelf



Prep Tables w/Galvanized Legs & Adjustable Undershelf

Model #	Sink Size (L x W x D)	Length	Width
EPT6R5-3060GSK-L/GSK-R	16" x 20" x 12" (LH or RH)	60"	30"
EPT6R5-3072GSK-L/GSK-R	16" x 20" x 12" (LH or RH)	72"	30"

Prep Tables w/Stainless Steel Legs & Adjustable Undershelf

Model #	Sink Size (L x W x D)	Length	Width
EPT6R5-3060SSK-L/SSK-R	16" x 20" x 12" (LH or RH)	60"	30"
EPT6R5-3072SSK-L/SSK-R	16" x 20" x 12" (LH or RH)	72"	30"



EPT6R5-3060GSK-L



EPT6R5-3060SSK-L



Prep Tables w/Sink Bowl On Left Side & Adjustable Undershelf

- 16 Gauge 300 Series Stainless Steel
- Stainless Steel Legs With Flanged Feet And Adjustable Undershelf
- Great For Mobile Kitchens

Model #	Sink Size (L x W x D)	Length	Width
CGS-VTS54	10" x 14" x 8" (Sink Bowl Left Side 31" Tall)	54"	24"



EPT6R10-DL2B-72L



Prep Tables w/Sinks

- 16GA 300 Series Stainless Top w/10" Clip-Down Riser
- (1) 16" x 20" x 8"
- (1) 16" x 20" x 4" Bowl
- 4" Deckmount Faucet w/10" Swing Spout (PBF-4DM-10LF)
- (1) Roller Bearing Utensil Drawer w/ S/S Removable Liner
- (1) Poly Cutting Board 18" x 22" x 3/4" Thick
- Stainless Steel Legs & Adj Undershelf

Model #	Sink Location	Length	Width
EPT6R10-DL2B-72L/72R	LH or RH	72"	30"
EPT6R10-DL2B-96L/96R	LH or RH	96"	30"

Pro-Bowl Dishtables - 16GA

- 16GA 300 Series Stainless Steel
- 20-7/8" Opening
- Soiled Dishtable Includes An Integrally Welded Bowl 20" x 20" x 8"
- Stainless Steel Legs & Bracing w/Adj Stainless Bullet Feet



JDTC-20-36L



JDTS-20-36R



Clean Dishtables - Straight

Model #	Description	Length	Width
JDTC-20-26L/26R	26" Long (LH or RH)	26"	30"
JDTC-20-36L/36R	36" Long (LH or RH)	36"	30"
JDTC-20-48L/48R	48" Long (LH or RH)	48"	30"
JDTC-20-60L/60R	60" Long (LH or RH)	60"	30"
JDTC-20-72L/72R	72" Long (LH or RH)	72"	30"
JDTC-20-96L/96R	96" Long (LH or RH)	96"	30"

Soiled Dishtables - Straight - 20" x 20" x 8" Sink Bowl

Model #	Description	Length	Width
JDTS-20-36L/36R	36" Long (LH or RH)	36"	30"
JDTS-20-48L/48R	48" Long (LH or RH)	48"	30"
JDTS-20-60L/60R	60" Long (LH or RH)	60"	30"
JDTS-20-72L/72R	72" Long (LH or RH)	72"	30"



EDTC8-S30-L26



EDTS8-S30-R26



Dishtables - "E-Series" 18GA

- 18GA 300 Series Stainless Steel
- 20-7/8" Opening
- Soiled Dishtable Includes An Integrally Welded Bowl 20" x 20" x 8"
- Galvanized Legs & Bracing w/Adj Plastic Bullet Feet

Note: ** Indicates 16" x 20" x 8" Sink Bowl

Clean Dishtables - Straight

Model #	Description	Length	Width
EDTC8-S30-L26/R26	26" Long (LH or RH)	26"	30"
EDTC8-S30-L36/R36	36" Long (LH or RH)	36"	30"
EDTC8-S30-L48/R48	48" Long (LH or RH)	48"	30"
EDTC8-S30-L60/R60	60" Long (LH or RH)	60"	30"
EDTC8-S30-L72/R72	72" Long (LH or RH)	72"	30"

Soiled Dishtables - Straight - 20" x 20" x 8" Sink Bowl

Model #	Description	Length	Width
EDTS8-S30-L26/R26 **	26" Long (LH or RH)	26"	30"
EDTS8-S30-L36/R36	36" Long (LH or RH)	36"	30"
EDTS8-S30-L48/R48	48" Long (LH or RH)	48"	30"
EDTS8-S30-L60/R60	60" Long (LH or RH)	60"	30"
EDTS8-S30-L72/R72	72" Long (LH or RH)	72"	30"

Wall Mounted Sorting Shelves

- 18GA 300 Series Stainless Steel
- Solid Shelf-Drain Tube In Corner

Solid Sorting Shelves

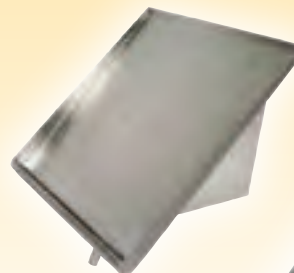


Model #	Description
PB-SRW-21	21" x 18"
PB-SRW-42	42" x 18"
PB-SRW-63	63" x 18"

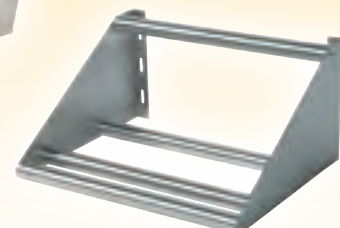
Tubular Sorting Shelves



Model #	Description
BHS1822-TS	22" x 18"
BHS1842-TS	42" x 18"
BHS1863-TS	63" x 18"



PB-SRW-21



BHS1822-TS



JDTS-20-60UCL



Pro-Bowl Undercounter Dishtables - 16GA

- 16GA 300 Series Stainless Steel
- Soiled Dish Table Includes An Integrally Welded Bowl 20" x 20" x 8"
- Available In Left Side or Right Side Sink Bowl Location

Pro-Bowl Undercounter Dishtable 16 GA Stainless Steel Legs And Adj Metal Bullet Feet

Model #	Bowl Size (L x W x D)	Length	Width
JDTS-20-50UCL/50UCR	20" x 20" x 8", (LH or RH)	50"	30"
JDTS-20-60UCL/60UCR	20" x 20" x 8", (LH or RH)	60"	30"



EDTS8-S30-60UCL



Undercounter Dishtables - "E-Series" 18GA

- 18GA 300 Series Stainless Steel
- Soiled Dish Table Includes An Integrally Welded Bowl 20" x 20" x 8"
- Available In Left Side or Right Side Sink Bowl Location

Undercounter Dishtable 18 GA Galvanized Legs And Adj Plastic Bullet Feet

Model #	Bowl Size (L x W x D)	Length	Width
EDTS8-S30-50UCL/50UCR	20" x 20" x 8", (LH or RH)	50"	30"
EDTS8-S30-60UCL/60UCR	20" x 20" x 8", (LH or RH)	60"	30"

Clean Dishtables/Pot Sinks "B-Series" 16GA

- 16GA 300 Series Stainless Steel Construction
- 18" x 24" x 14" Deep Sink Bowls
- 3 Rack Slides w/Storage Bracket
- 2 Drainboards 24" Long
- Stainless Steel Legs & Bracing w/Adj Bracing Front To Back



DT3B18244-2D18R

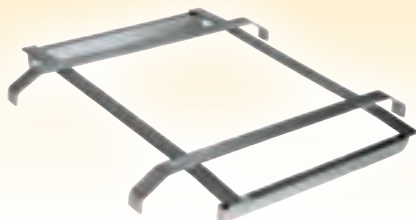


Clean Dishtables/Pot Sinks

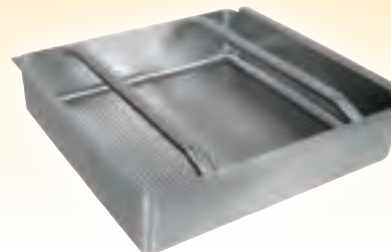
Model #	Bowl Size (L x W x D)	Length	Width
DT3B18244-2D18L/2D18R	18" x 24" x 14" (18" LH or RH Drain Board) (CERTIFICATION PENDING)	91-1/2"	30"
DT3B18244-2D24L/2D24R	18" x 24" x 14" (24" LH or RH Drain Board) (NSF CERTIFIED)	103"	30"
DT3B244-2D24L/2D24R	24" x 24" x 14" (24" LH or RH Drain Board) (CERTIFICATION PENDING)	121-1/2"	30"

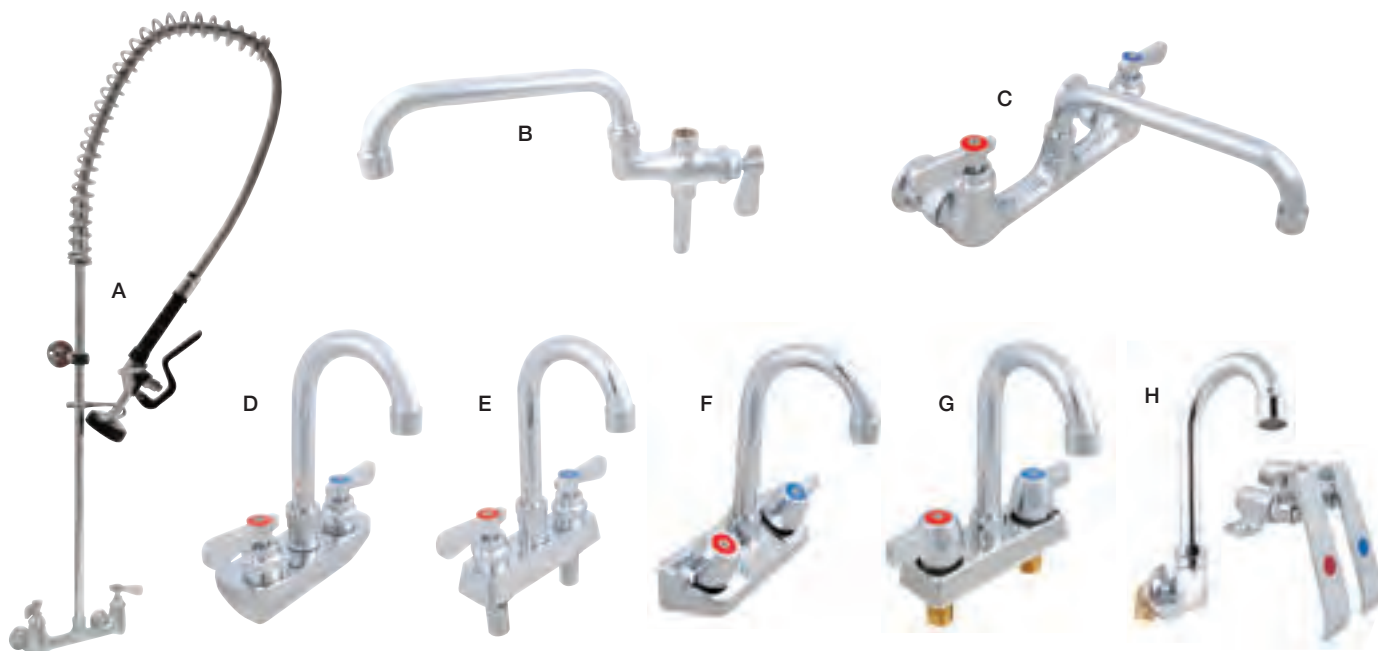
NEW!

Dishtable Rack Slide PB-DTS-20RS:



Pre-Rinse Basket PB-DTA-20-01:





Low-Lead Faucets

Environmentally Friendly! Less than .25% lead within brass alloy content for healthier drinking water.



Pre-Rinse Units

Low-Lead Model #	Description
------------------	-------------

- | | |
|---------------|---------------------------|
| A. PB-PRW-1LF | Splash Mount 8" On-Center |
|---------------|---------------------------|

Heavy Duty Splashmount Faucets

Low-Lead Model #	Description
------------------	-------------

- | | |
|--------------|--------------------------------|
| C. PBF-8-SLF | 8" Swing Spout |
| PBF-10-SLF | 10" Swing Spout |
| PBF-12-SLF | 12" Swing Spout |
| PBF-14-SLF | 14" Swing Spout |
| PBF-18-DJSLF | 18" Double Jointed Swing Spout |

Economy Gooseneck Faucets

Low-Lead Model #	Description
------------------	-------------

- | | |
|---------------|--|
| F. PBF-4-S-LF | Splash Mount, 3.5" Spout, 4" On-Center |
| G. PBF-4-D-LF | Deck Mount, 3.5" Spout, 4" On-Center |

Add-On Faucet

Low-Lead Model #	Description
------------------	-------------

- | | |
|--------------|-----------------|
| B. PB-AD-8LF | 8" Swing Spout |
| PB-AD-10LF | 10" Swing Spout |
| PB-AD-12LF | 12" Swing Spout |
| PB-AD-14LF | 14" Swing Spout |

Heavy Duty Gooseneck Faucets

Low-Lead Model #	Description
------------------	-------------

- | | |
|-----------------|--|
| D. PBF-4SM-3GLF | Splash Mount, 3.5" Spout, 4" On-Center, 1/4 Turn |
| E. PBF-4DM-3GLF | Deck Mount, 3.5" Spout, 4" On-Center, 1/4 Turn |
| PBF-4SM-5GLF | Splash Mount, 5" Spout, 4" On-Center, 1/4 Turn |
| PBF-4DM-5GLF | Deck Mount, 5" Spout, 4" On-Center, 1/4 Turn |

Gooseneck Faucet w/ Knee Valve & Bracket

Low-Lead Model #	Description
------------------	-------------

- | | |
|--------------------|--------------------------|
| H. PB-GNKV-SM-3GLF | Splash Mount, 3.5" Spout |
| PB-GNKV-DM-3GLF | Deck Mount, 3.5" Spout |

S/S Wrist Blades



Model #	Description
PB-WR	1 Pair, Use w/ Heavy Duty Faucets Only

Lever Drains



Model #	Description
PB-LWR-1	Twist, 3.5" Drain Opening, 2" Outlet
PB-LWS-1	Straight, 3.5" Drain Opening, 2" Outlet



Drop-In Hand Sinks

1 Bowl

Model #	Bowl Size (L x W x D)	Sink Size (L x W x D)	Certification	Side Splash	
I. PB-DISINK090905	9" x 9" x 5"	12" x 14" x 5"	Pending	N/A	NEW!
J. PB-DISINK101405	10" x 14" x 5"	12-1/4" x 13-11/16" x 5"	NSF@ COMPONENT, CSA®	N/A	
K. PB-DISINK101410	10" x 14" x 10"	11-7/8" x 17-13/16" x 10"	NSF@ COMPONENT, CSA®	N/A	
L. PB-DISINK101405-P-SSLR	10" x 14" x 5"	12-1/4" x 13-11/16" x 5"	NSF@ COMPONENT, CSA® (Faucet Included: PBF-4-DLF)	LH & RH	
M. PB-DISINK101410-P-SSLR	10" x 14" x 10"	11-7/8" x 17-13/16" x 10"	NSF@ COMPONENT, CSA® (Faucet Included: PBF-4-DLF)	LH & RH	
N. SK01	12.5" x 10.5" x 6"	15" x 15" x 6"	NSF@ COMdsPONENT	N/A	
O. PB-DISINK201608	20" x 16" x 8"	23-5/8" x 21-5/8" x 8"	Pending	N/A	NEW!
PB-DISINK201612	20" x 16" x 12"	23-5/8" x 21-5/8" x 12"	Pending	N/A	NEW!
P. PB-DISINK282012	28" x 20" x 12"	31-5/8" x 25-5/8" x 12"	Pending	N/A	NEW!

2 Bowl

Model #	Bowl Size (L x W x D)	Sink Size (L x W x D)	Certification	Side Splash	
Q. PB-DISINK101410-2	10" x 14" x 10" (2 Bowl)	24" x 18" x 10"	NSF@ COMPONENT, CSA®	N/A	
PB-DISINK141612-2	14" x 16" x 12" (2 Bowl)	33" x 22" x 12"	Pending	N/A	NEW!
PB-DISINK201612-2	20" x 16" x 12" (2 Bowl)	45" x 22" x 12"	Pending	N/A	NEW!

3 Bowl

Model #	Bowl Size (L x W x D)	Sink Size (L x W x D)	Certification	Side Splash	
R. PB-DISINK101410-3	10" x 14" x 10" (3 Bowl)	36" x 18" x 10"	NSF@ COMPONENT, CSA®	N/A	
PB-DISINK162012-3	16" x 20" x 12" (3 Bowl)	54" x 24" x 12"	Pending	N/A	NEW!

Pro-Bowl Hand Sinks

Model #	Sink Size (L x W x D)	Faucet Location	Side Splash
A. PBHS-W-KVMB-1	14" x 10" x 5" (1-7/8" Drain)	Splash Mount - 1 Hole Centered (Goose Neck Spout And Knee Valves Included.)	N/A
PBHS-W-KVMB-SSP	14" x 10" x 5" (1-7/8" Drain)	Splash Mount - 1 Hole Centered (Goose Neck Spout And Knee Valves Included.)	LH & RH
B. PBHS-99-P-SSTD	9" x 9" x 5" (1-7/8" Drain)	Splash Mount - 4" On-Center (Goose Neck Faucet, Soap And Towel Dispenser Included.)	LH & RH
C. PBHS-W-0909	9" x 9" x 5" (1-7/8" Drain)	Splash Mount - 4" On-Center	N/A
D. PBHS-W-0909-SSLR	9" x 9" x 5" (1-7/8" Drain)	Splash Mount - 4" On-Center	LH & RH



Also Available With Side Splash



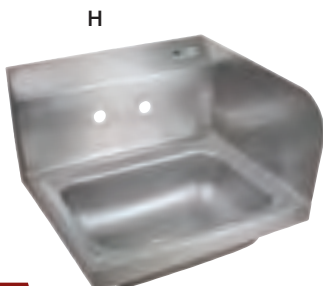
Pro-Bowl Hand Sinks

Model #	Sink Size (L x W x D)	Faucet Location	Side Splash
E. PBHS-W-1410	14" x 10" x 5" (1-7/8" Drain)	Splash Mount - 4" On-Center	N/A
F. PBHS-W-1410-P	14" x 10" x 5" (1-7/8" Drain)	Splash Mount - 4" On-Center (Faucet Included)	N/A
G. PBHS-W-1410-SSL	14" x 10" x 5" (1-7/8" Drain)	Splash Mount - 4" On-Center	LH



Pro-Bowl Hand Sinks

Model #	Sink Size (L x W x D)	Faucet Location	Side Splash
H. PBHS-W-1410-SSR	14" x 10" x 5" (1-7/8" Drain)	Splash Mount - 4" On-Center	RH
I. PBHS-W-1410-SSLR	14" x 10" x 5" (1-7/8" Drain)	Splash Mount - 4" On-Center	LH & RH
J. PBHS-W-1410-1	14" x 10" x 5" (1-7/8" Drain)	Splash Mount - 1 Hole Centered	N/A
K. PBHS-W-1410-1-SSLR	14" x 10" x 5" (1-7/8" Drain)	Splash Mount - 1 Hole Centered	LH & RH



SPRFSF0215

Pro-Bowl Hand Sinks

Model #	Sink Size (L x W x D)	Faucet Location	Side Splash
L. PBHS-W-1410-P-SSLR	14" x 10" x 5"	Splash Mount - 4" On-Center (Faucet Included)	LH & RH
M. PBHS-W-1410-4D	14" x 10" x 5" (3-1/2" Drain)	Splash Mount - 4" On-Center	N/A
N. PBHS-W-1410-2DM	14" x 10" x 5"	Deck Mount - 4" On-Center	N/A



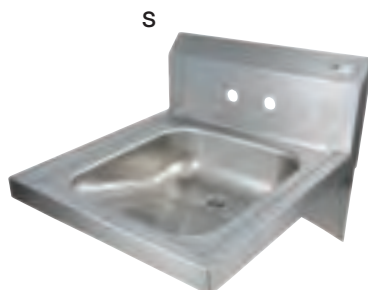
Pro-Bowl Hand Sinks

Model #	Sink Size (L x W x D)	Faucet Location	Side Splash
O. PBHS-W-1410-2DM-SSLR	14" x 10" x 5"	Deck Mount - 4" On-Center	LH & RH
P. PBHS-W-1410-SDTD	14" x 10" x 5" (3-1/2" Drain)	Splash Mount - 4" On-Center (Soap & Paper Towel Dispenser Included.)	N/A
Q. PBHS-W-1410-1-SDTD	14" x 10" x 5" (3-1/2" Drain)	Splash Mount - 1 Hole Centered (Soap & Paper Towel Dispenser Included.)	N/A



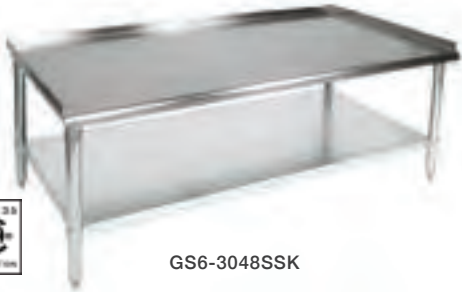
Pro-Bowl Hand Sinks

Model #	Sink Size (L x W x D)	Faucet Location	Side Splash
R. PBHS-ADA-P-STD	14" x 16" x 5" (1-7/8" Drain)	Splash Mount - 4" On-Center (Removeable Front Panel, Goose Neck Faucet, Soap & Paper Towel Dispenser Included.)	N/A
S. PBHS-W-1416ADAS	14" x 16" x 5" (1-7/8" Drain)	Splash Mount - 4" On-Center	N/A
T. PBHS-W-1616	16" x 16" x 10" (3-1/2" Drain)	Deck Mount - 1 Hole Centered	N/A
U. PBHS-W-1616-SSLR	16" x 16" x 10" (3-1/2" Drain)	Deck Mount - 1 Hole Centered	LH & RH



CSA CERTIFIED ONLY





GS6-3048SSK



EES8-3048

Equipment Stands -16GA

- 16GA Stainless Steel Top
- 18GA Adjustable Undershef
- GALV or Stainless Steel Legs And Adj Bullet Feet
- 1.5" High Rear and Side Risers
- 24" Overall Height

GALV Legs & Adj Undershef

Model #	Length	Width
GS6-3015GSK	15"	30"
GS6-3018GSK	18"	30"
GS6-3024GSK	24"	30"
GS6-3036GSK	36"	30"
GS6-3048GSK	48"	30"
GS6-3060GSK	60"	30"
GS6-3072GSK	72"	30"

Stainless Steel Legs & Adj Undershef

Model #	Length	Width
GS6-3015SSK	15"	30"
GS6-3018SSK	18"	30"
GS6-3024SSK	24"	30"
GS6-3036SSK	36"	30"
GS6-3048SSK	48"	30"
GS6-3060SSK	60"	30"
GS6-3072SSK	72"	30"

Equipment Stands "E-Series" 18GA

- 18GA 430 Series Stainless Steel Top
- 18GA Adjustable Undershef
- GALV or Stainless Steel Legs And Adj Bullet Feet
- 1.5" High Rear and Side Risers
- 24" Overall Height

GALV Legs & Adj Undershef



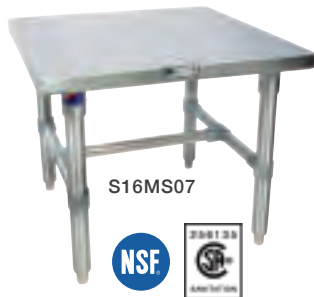
Model #	Length	Width
EES8-3015	15"	30"
EES8-3018	18"	30"
EES8-3024	24"	30"
EES8-3036	36"	30"
EES8-3048	48"	30"
EES8-3060	60"	30"
EES8-3072	72"	30"

Stainless Steel Legs & Adj Undershef

Model #	Length	Width
EES8-3015SSK	15"	30"
EES8-3018SSK	18"	30"
EES8-3024SSK	24"	30"
EES8-3036SSK	36"	30"
EES8-3048SSK	48"	30"
EES8-3060SSK	60"	30"
EES8-3072SSK	72"	30"

Machine Stands

- 16GA 300 Series Stainless Steel
- 1 5/8" Legs & Bracing w/Adj Metal Bullet Feet
- Shipped Knocked Down Easy-To-Assemble
- Available Welded Setup At No Additional Cost



S16MS07



Heavy Duty Machine Stands

- 14GA 300 Series Stainless Steel
- 1 5/8" Legs & Bracing w/Adj Metal Bullet Feet
- Marine Edge: 20" Tall
- Shipped Knocked Down Easy-To-Assemble



MS4-2424GSK



Galvanized Legs and Bracing

Model #	Length	Width
S16MS01	24"	20"
S16MS02	24"	24"
S16MS03	30"	20"
S16MS04	30"	24"
S16MS05	30"	30"

Stainless Steel Legs And Bracing

Model #	Length	Width
S16MS06	24"	20"
S16MS07	24"	24"
S16MS08	30"	20"
S16MS09	30"	24"
S16MS10	30"	30"

Galvanized Legs and Undershef

Model #	Length	Width
MS4-2424GSK	24"	24"
MS4-2430GSK	30"	24"
MS4-3030GSK	30"	30"
MS4-3036GSK	36"	30"

Stainless Steel Legs And Undershef

Model #	Length	Width
MS4-2424SSK	24"	24"
MS4-2430SSK	30"	24"
MS4-3030SSK	30"	30"
MS4-3036SSK	36"	30"

Economy Overshelves

- 18GA 300 Series Stainless Steel
- Double Overshelves Including Adjustable Lower Shelf

Single Economy Overshelves

Model #	Length	Width
OS-ES-1248	48"	12"
OS-ES-1260	60"	12"
OS-ES-1272	72"	12"
OS-ES-1296	96"	12"
OS-ES-1848	48"	18"
OS-ES-1860	60"	18"
OS-ES-1872	72"	18"
OS-ES-1896	96"	18"



Double Economy Overshelves

Model #	Length	Width
OS-ED-1248	48"	12"
OS-ED-1260	60"	12"
OS-ED-1272	72"	12"
OS-ED-1296	96"	12"
OS-ED-1848	48"	18"
OS-ED-1860	60"	18"
OS-ED-1872	72"	18"
OS-ED-1896	98"	18"



Aluminum Dunnage Rack

- 6065 Aluminum Constructions
- 1.5" Square Tube Frame
- 1,500 lbs Weight Capacity

Model #	(L x W x H)
ALJB362012	36" x 20" x 12"
ALJB362412	36" x 24" x 12"
ALJB482012	48" x 20" x 12"
ALJB482412	48" x 24" x 12"
ALJB602012	60" x 20" x 12"
ALJB602412	60" x 24" x 12"



Mobile Pan Racks (Front & Side Load)

- 6063 Aluminum Constructions
- 1" Square Tube Frame With Bolted Cross Bracing
- 3" Pan Spacing/20 Pan Capacity, 5" Casters



NESTING RACKS

Standard Mobile Pan Rack

Model #	Description	(L x W x H)
ABPR-1820-3KD	Front Load	26" x 20-1/2" x 69"
ABPR-1820-PC	Clear Plastic Cover (Front Load Only)	28" x 23" x 61"
ABPR-1820-3KDS	Side Load	29-1/2" x 19-1/2" x 69"

ABPR-1820-3KD

ABPR-1820-RKD

ABPR-1820-ZN



Rounded Top Mobile Pan Rack

Model #	Description	(L x W x H)
ABPR-1820-RKD	Front Load	26" x 20-1/2" x 69"
ABPR-1820-RKDS	Side Load	29-1/2" x 19-1/2" x 69-3/4"

ABPR-1820-3KDS

ABPR-1820-RKDS

ABPR-1820-ZNS



Nesting Mobile Pan Rack (Set-Up)

Model #	Description	(L x W x H)
ABPR-1820-ZN	Front Load	26" x 20.5" x 69"
ABPR-1820-ZNS	Side Load	29-1/2" x 19-1/2" x 71"

Stallion Work Tables w/Adjustable Stainless Steel Legs & Lower Shelf

- 16GA 300 Series Stainless Steel
 - 5" High, 1.5" Deep Clip-Down Riser
 - Stallion Edge, Straight Turndown on Sides
 - Stainless Steel Adjustable Lower Shelf
 - Stainless Steel Legs And Adj Metal Bullet Feet
 - Shipped Knocked-Down, Easy-To-Assemble
- Note: *(Allow Up To 10 Days For Shipment)



ST6-2436SSK



ST6R5-2436SSK



Flat Top Work Tables w/Lower Shelf

Model #	Length	Width
ST6-2430SSK	30"	24"
ST6-2436SSK	36"	24"
ST6-2448SSK	48"	24"
ST6-2460SSK	60"	24"
ST6-2472SSK	72"	24"
ST6-2484SSK	84"	24"
ST6-2496SSK	96"	24"
ST6-24108SSK *	108"	24"
ST6-24120SSK *	120"	24"
ST6-3030SSK	30"	30"
ST6-3036SSK	36"	30"
ST6-3048SSK	48"	30"
ST6-3060SSK	60"	30"
ST6-3072SSK	72"	30"
ST6-3084SSK	84"	30"
ST6-3096SSK	96"	30"
ST6-30108SSK *	108"	30"
ST6-30120SSK *	120"	30"
ST6-3648SSK	48"	36"
ST6-3660SSK	60"	36"
ST6-3672SSK	72"	36"
ST6-3684SSK	84"	36"
ST6-3696SSK	96"	36"

5" Riser Top Work Tables w/Lower Shelf

Model #	Length	Width
ST6R5-2430SSK	30"	24"
ST6R5-2436SSK	36"	24"
ST6R5-2448SSK	48"	24"
ST6R5-2460SSK	60"	24"
ST6R5-2472SSK	72"	24"
ST6R5-2484SSK	84"	24"
ST6R5-2496SSK	96"	24"
ST6R5-24108SSK *	108"	24"
ST6R5-24120SSK *	120"	24"
ST6R5-3030SSK	30"	30"
ST6R5-3036SSK	36"	30"
ST6R5-3048SSK	48"	30"
ST6R5-3060SSK	60"	30"
ST6R5-3072SSK	72"	30"
ST6R5-3084SSK	84"	30"
ST6R5-3096SSK	96"	30"
ST6R5-30108SSK *	108"	30"
ST6R5-30120SSK *	120"	30"

Casters

- 5" Heavy Duty Locking Casters For Round Legs



Model #	Descriptions
CAS01-R	Set of 4
CAS02-R	Set of 6

Self Closing Stainless Steel Drawers

- 20" x 20" x 5"
- Self Closing Drawer
- Stainless Steel Front Drawer And Pan



Stainless Steel Roller Bearings

Model #	Descriptions
DR2020SC-S24	24" Wide Stainless Tables Only
DR2020SC-S30	30" Wide Stainless Tables Only
DR2020SC-S36	36" Wide Stainless Tables Only
DR2020SC-W	Wood Top Tables Only - Any Size

Stallion Work Tables w/Adjustable Galvanized Legs & Lower Shelf

- 16GA 300 Series Stainless Steel
 - 5" High, 1.5" Deep Clip-Down Riser
 - Stallion Edge, Straight Turndown on Sides
 - Galvanized Adjustable Lower Shelf
 - Galvanized Legs And Adj Metal Bullet Feet
 - Shipped Knocked-Down, Easy-To-Assemble
- Note: *(Allow Up To 10 Days For Shipment)



ST6-2436GSK



ST6R5-2436GSK

Flat Top Work Tables w/Lower Shelf

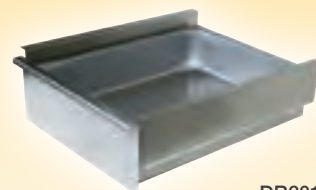
Model #	Length	Width
ST6-2430GSK	30"	24"
ST6-2436GSK	36"	24"
ST6-2448GSK	48"	24"
ST6-2460GSK	60"	24"
ST6-2472GSK	72"	24"
ST6-2484GSK *	84"	24"
ST6-2496GSK	96"	24"
ST6-24108GSK *	108"	24"
ST6-24120GSK *	120"	24"
ST6-3030GSK	30"	30"
ST6-3036GSK	36"	30"
ST6-3048GSK	48"	30"
ST6-3060GSK	60"	30"
ST6-3072GSK	72"	30"
ST6-3084GSK *	84"	30"
ST6-3096GSK	96"	30"
ST6-30108GSK *	108"	30"
ST6-30120GSK *	120"	30"
ST6-3648GSK	48"	36"
ST6-3660GSK	60"	36"
ST6-3672GSK	72"	36"
ST6-3684GSK	84"	36"
ST6-3696GSK	96"	36"

5" Riser Top Work Tables w/Lower Shelf

Model #	Length	Width
ST6R5-2430GSK	30"	24"
ST6R5-2436GSK	36"	24"
ST6R5-2448GSK	48"	24"
ST6R5-2460GSK	60"	24"
ST6R5-2472GSK	72"	24"
ST6R5-2484GSK *	84"	24"
ST6R5-2496GSK	96"	24"
ST6R5-24108GSK *	108"	24"
ST6R5-24120GSK *	120"	24"
ST6R5-3030GSK	30"	30"
ST6R5-3036GSK	36"	30"
ST6R5-3048GSK *	48"	30"
ST6R5-3060GSK	60"	30"
ST6R5-3072GSK	72"	30"
ST6R5-3084GSK	84"	30"
ST6R5-3096GSK	96"	30"
ST6R5-30108GSK *	108"	30"
ST6R5-30120GSK *	120"	30"

Stainless Steel Drawers

- 15" x 20" x 5"
- Stainless Steel Front Drawer And Pan
- Available In Poly Friction Slides or Stainless Steel Roller Bearings



DR2015-S24

Poly Friction Slides

Model #	Descriptions
DP2015-S24	24" Wide Stainless Tables Only (Poly Friction Slides)
DP2015-S30	30" Wide Stainless Tables Only (Poly Friction Slides)
DP2015-S36	36" Wide Stainless Tables Only (Poly Friction Slides)
DP2015-W	Wood Top Tables Only - Any Size (Poly Friction Slides)

Stainless Steel Roller Bearings

Model #	Descriptions
DR2015-S24	24" Wide Stainless Tables Only (Stainless Steel Roller Bearings)
DR2015-S30	30" Wide Stainless Tables Only (Stainless Steel Roller Bearings)
DR2015-S36	36" Wide Stainless Tables Only (Stainless Steel Roller Bearings)
DR2015-W	Wood Top Tables Only - Any Size (Stainless Steel Roller Bearings)

Stallion Work Tables w/Adjustable Stainless Steel Bracing

- 16GA 300 Series Stainless Steel
- 5" High, 1.5" Deep Clip-Down Riser
- Stallion Edge, Straight Turndown on Sides
- Stainless Steel Legs And Bracing w/ Metal Bullet Feet
- Shipped Knocked-Down, Easy-To-Assemble

Note: *(Allow Up To 10 Days For Shipment)



ST6-2436SBK



ST6R5-2436SBK



Flat Top Work Tables w/Stainless Bracing

Model #	Length	Width
ST6-2430SBK	30"	24"
ST6-2436SBK	36"	24"
ST6-2448SBK	48"	24"
ST6-2460SBK	60"	24"
ST6-2472SBK	72"	24"
ST6-2484SBK	84"	24"
ST6-2496SBK	96"	24"
ST6-24108SBK *	108"	24"
ST6-24120SBK *	120"	24"
ST6-3030SBK	30"	30"
ST6-3036SBK	36"	30"
ST6-3048SBK	48"	30"
ST6-3060SBK	60"	30"
ST6-3072SBK	72"	30"
ST6-3084SBK	84"	30"
ST6-3096SBK	96"	30"
ST6-30108SBK *	108"	30"
ST6-30120SBK *	120"	30"
ST6-3648SBK	48"	36"
ST6-3660SBK	60"	36"
ST6-3672SBK	72"	36"
ST6-3684SBK	84"	36"
ST6-3696SBK	96"	36"

5" Riser Top Work Tables w/Stainless Bracing

Model #	Length	Width
ST6R5-2430SBK	30"	24"
ST6R5-2436SBK	36"	24"
ST6R5-2448SBK	48"	24"
ST6R5-2460SBK	60"	24"
ST6R5-2472SBK	72"	24"
ST6R5-2484SBK	84"	24"
ST6R5-2496SBK	96"	24"
ST6R5-24108SBK *	108"	24"
ST6R5-24120SBK *	120"	24"
ST6R5-3030SBK	30"	30"
ST6R5-3036SBK	36"	30"
ST6R5-3048SBK	48"	30"
ST6R5-3060SBK	60"	30"
ST6R5-3072SBK	72"	30"
ST6R5-3084SBK	84"	30"
ST6R5-3096SBK	96"	30"
ST6R5-30108SBK *	108"	30"
ST6R5-30120SBK *	120"	30"



EFT8-3015

Riser Top Filler Tables 1.5" Turn Up w/Adjustable Undershelf

- 18GA 430 Series Stainless Steel
- Stallion Edge Both Faces, Straight Turn Down On Sides
- 1.5" Turned Up Rear Riser
- Adjustable Lower Shelf w/Plastic Bullet Feet
- Shipped Knocked-Down, Easy-To-Assemble

Galvanized Legs And Shelf



Model #	Length	Width
EFT8-3015	15"	30"
EFT8-3018	18"	30"
EFT8-3024	24"	30"

Stainless Steel Legs And Shelf

Model #	Length	Width
EFT8-3015SSK	15"	30"
EFT8-3018SSK	18"	30"
EFT8-3024SSK	24"	30"

- 16GA 300 Series Stainless Steel
- 5" High, 1.5" Deep Clip-Down Riser
- Stallion Edge, Straight Turndown on Sides

- Galvanized Legs And Bracing w/ Metal Bullet Feet
 - Shipped Knocked-Down, East-To-Assemble
- Note: *(Allow Up To 10 Days For Shipment)



ST6-2436GBK



ST6R5-2436GBK



Flat Top Work Tables w/Galvanized Bracing

5" Riser Top Work Tables w/Galvanized Bracing

Model #	Length	Width
ST6-2430GBK	30"	24"
ST6-2436GBK	36"	24"
ST6-2448GBK	48"	24"
ST6-2460GBK	60"	24"
ST6-2472GBK	72"	24"
ST6-2484GBK *	84"	24"
ST6-2496GBK	96"	24"
ST6-24108GBK *	108"	24"
ST6-24120GBK *	120"	24"
ST6-3030GBK	30"	30"
ST6-3036GBK	36"	30"
ST6-3048GBK	48"	30"
ST6-3060GBK	60"	30"
ST6-3072GBK	72"	30"
ST6-3084GBK *	84"	30"
ST6-3096GBK	96"	30"
ST6-30108GBK *	108"	30"
ST6-30120GBK *	120"	30"
ST6-3648GBK	48"	36"
ST6-3660GBK	60"	36"
ST6-3672GBK	72"	36"
ST6-3684GBK	84"	36"
ST6-3696GBK	96"	36"

Model #	Length	Width
ST6R5-2430GBK	30"	24"
ST6R5-2436GBK	36"	24"
ST6R5-2448GBK	48"	24"
ST6R5-2460GBK	60"	24"
ST6R5-2472GBK	72"	24"
ST6R5-2484GBK *	84"	24"
ST6R5-2496GBK	96"	24"
ST6R5-24108GBK *	108"	24"
ST6R5-24120GBK *	120"	24"
ST6R5-3030GBK	30"	30"
ST6R5-3036GBK	36"	30"
ST6R5-3048GBK	48"	30"
ST6R5-3060GBK	60"	30"
ST6R5-3072GBK	72"	30"
ST6R5-3084GBK *	84"	30"
ST6R5-3096GBK	96"	30"
ST6R5-30108GBK *	108"	30"
ST6R5-30120GBK *	120"	30"

Wall Corner Guards

- 16GA Stainless Steel
- 2" x 2" and 4" x 4" Sizes
- Available For Inside Or Outside Corners
- Sold Individually

Model #	Size (Lx W x H)	Description
CORNER482-OUT	2" x 2" x 48"	Outside Corner
CORNER602-OUT	2" x 2" x 60"	Outside Corner
CORNER962-OUT	2" x 2" x 96"	Outside Corner
CORNER484-OUT	4" x 4" x 48"	Outside Corner
CORNER484-IN	4" x 4" x 48"	Inside Corner



1 1/2" Thick Maple Wood Bakers Table Top

- 1 1/2" Thick Hard Rock Flat Maple Top w/Penetrating Oil Finish
- Available In Galvanized or Stainless Steel Adj Lower Shelf
- Available In Galvanized or Stainless Steel Adj Bracing
- Adjustable Bullet Feet
- Shipped Knocked-Down, Easy-To-Assemble



JNS10



Galvanized Legs & Adjustable Lower Shelf

Model #	Length	Width
JNS09	48"	30"
JNS10	60"	30"
JNS11	72"	30"
JNS13	96"	30"



JNB09



Galvanized Legs & Adjustable Bracing

Model #	Length	Width
JNB08	48"	30"
JNB09	60"	30"
JNB10	72"	30"
JNB11	96"	30"
JNB14	48"	36"
JNB15	60"	36"
JNB16	72"	36"
JNB17	96"	36"

1 3/4" Thick Maple Wood Bakers Table Top

- 1 3/4" Thick Hard Rock Flat Maple Top w/Penetrating Oil Finish
- Available In Stainless Steel Adj Lower Shelf Or Adj Bracing
- Adjustable Bullet Feet
- Shipped Knocked-Down, Easy-To-Assemble



SNS09



Stainless Steel Legs & Adjustable Lower Shelf

Model #	Length	Width
SNS08	48"	30"
SNS09	60"	30"
SNS10	72"	30"
SNS11	96"	30"



SNB09



Stainless Steel Legs & Adjustable Bracing

Model #	Length	Width
SNB08	48"	30"
SNB09	60"	30"
SNB10	72"	30"
SNB11	96"	30"
SNB14	48"	36"
SNB15	60"	36"
SNB16	72"	36"
SNB17	96"	36"



SC Style Replacement Tops - 1-3/4" Thick Hard Rock Maple

- 1-3/4" Thick Hard Rock Maple
- Penetrating Oil Finish
- Non-Reversible

Model #	Length	Width	Weight
SC011-O	48"	30"	77 lbs
SC012-O	60"	30"	96 lbs
SC013-O	72"	30"	116 lbs
SC015-O	96"	30"	154 lbs

Fax: (800) 433-2667

1 3/4" Thick Maple Wood Top With 4" Coved Riser Rear & Sides

- 1 3/4" Thick Hard Rock Flat Maple Top w/Penetrating Oil Finish
- 4" Coved Riser Rear And Sides
- Available In Galvanized or Stainless Steel Adj Lower Shelf
- Available In Galvanized or Stainless Steel Adj Bracing
- Shipped Knocked-Down, Easy-To-Assemble



DNS08



Galvanized Legs & Adjustable Lower Shelf

Model #	Length	Width
DNS07	48"	30"
DNS08	60"	30"
DNS09	72"	30"
DNS11	96"	30"



DNB08



Galvanized Legs & Adjustable Bracing

Model #	Length	Width
DNB07	48"	30"
DNB08	60"	30"
DNB09	72"	30"
DNB11	96"	30"
DNB13	48"	36"
DNB14	60"	36"
DNB15	72"	36"
DNB17	96"	36"



DSS07



Stainless Steel Legs & Adjustable Lower Shelf

Model #	Length	Width
DSS06	48"	30"
DSS07	60"	30"
DSS08	72"	30"
DSS09	96"	30"



DSB07



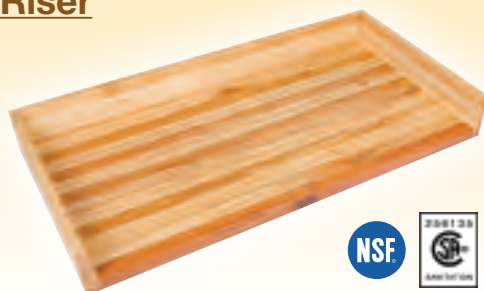
Stainless Steel Legs & Adjustable Bracing

Model #	Length	Width
DSB06	48"	30"
DSB07	60"	30"
DSB08	72"	30"
DSB09	96"	30"
DSB11	48"	36"
DSB12	60"	36"
DSB13	72"	36"
DSB14	96"	36"

SB Style Replacement Tops - 1-3/4" Thick Hard Rock Maple With 4" High Horizontally Vertical Coved Riser

- 1-3/4" Thick Hard Rock Maple
- Penetrating Oil Finish
- Non-Reversible
- 4" High Horizontal and Vertical Coved Risers On Back And Sides

Model #	Length	Width	Weight
SB009-O	48"	30"	106 lbs
SB010-O	60"	30"	127 lbs
SB011-O	72"	30"	149 lbs
SB013-O	96"	30"	192 lbs



"E-Series" Budget Work Tables

- 18GA Type 430 Stainless Steel Flat Top Tables
- Stallion Edge Both Faces, Straight Turn Down On Sides
- Adjustable Lower Shelf
- Legs And Plastic Bullet Feet
- Shipped Knocked-Down, Easy-To-Assemble



FBLG4824



FBLS4824

Flat Top Tables Galvanized Legs & Adjustable Undershef

Model #	Length	Width
FBLG3618	36"	18"
FBLG4818	48"	18"
FBLG6018	60"	18"
FBLG7218	72"	18"
FBLG9618	96"	18"
FBLG2424	24"	24"
FBLG3024	30"	24"
FBLG3624	36"	24"
FBLG4824	48"	24"
FBLG6024	60"	24"
FBLG7224	72"	24"
FBLG8424	84"	24"
FBLG9624	96"	24"
FBLG3030	30"	30"
FBLG3630	36"	30"
FBLG4830	48"	30"
FBLG6030	60"	30"
FBLG7230	72"	30"
FBLG8430	84"	30"
FBLG9630	96"	30"

Flat Top Tables Stainless Steel Legs & Adjustable Undershef

Model #	Length	Width
FBLS2418	24"	18"
FBLS3018	30"	18"
FBLS3618	36"	18"
FBLS4818	48"	18"
FBLS6018	60"	18"
FBLS7218	72"	18"
FBLS9618	96"	18"
FBLS2424	24"	24"
FBLS3024	30"	24"
FBLS3624	36"	24"
FBLS4824	48"	24"
FBLS6024	60"	24"
FBLS7224	72"	24"
FBLS9624	96"	24"
FBLS3030	30"	30"
FBLS3630	36"	30"
FBLS4830	48"	30"
FBLS6030	60"	30"
FBLS7230	72"	30"
FBLS9630	96"	30"

Boos® Stainless Steel Cleaner

All natural streak-free formula that produces a beautiful shine on appliances and all stainless steel surfaces. Cleans food residue, fingerprints, and kitchen grease. Safe for use in food handling environments. Breezy Citrus Orchard scent, fine mist.

Model #	Description
BSC-3	8oz Bottles - 3 Per Case
BSC-12	8oz Bottles - 12 Per Case





UFBLG4824



UFBS4824



**1.5" Turn Up Rear Riser Top Table
Galvanized Legs & Adjustable Undershelf**

Model #	Length	Width
UFBLG3618	36"	18"
UFBLG4818	48"	18"
UFBLG6018	60"	18"
UFBLG7218	72"	18"
UFBLG9618	96"	18"
UFBLG2424	24"	24"
UFBLG3024	30"	24"
UFBLG3624	36"	24"
UFBLG4824	48"	24"
UFBLG6024	60"	24"
UFBLG7224	72"	24"
UFBLG8424	84"	24"
UFBLG9624	96"	24"
UFBLG3030	30"	30"
UFBLG3630	36"	30"
UFBLG4830	48"	30"
UFBLG6030	60"	30"
UFBLG7230	72"	30"
UFBLG8430	84"	30"
UFBLG9630	96"	30"

**1.5" Turn Up Rear Riser Top Table
Stainless Legs & Adjustable Undershelf**

Model #	Length	Width
UFBSL2418	24"	18"
UFBSL3018	30"	18"
UFBSL3618	36"	18"
UFBSL4818	48"	18"
UFBSL6018	60"	18"
UFBSL7218	72"	18"
UFBSL9618	96"	18"
UFBSL2424	24"	24"
UFBSL3024	30"	24"
UFBSL3624	36"	24"
UFBSL4824	48"	24"
UFBSL6024	60"	24"
UFBSL7224	72"	24"
UFBSL9624	96"	24"
UFBSL3030	30"	30"
UFBSL3630	36"	30"
UFBSL4830	48"	30"
UFBSL6030	60"	30"
UFBSL7230	72"	30"
UFBSL9630	96"	30"

**5" Riser Top Table
Galvanized Legs & Adjustable Undershelf**

Model #	Length	Width
FBLGR5-2424	24"	24"
FBLGR5-3024	30"	24"
FBLGR5-3624	36"	24"
FBLGR5-4824	48"	24"
FBLGR5-6024	60"	24"
FBLGR5-7224	72"	24"
FBLGR5-8424	84"	24"
FBLGR5-9624	96"	24"
FBLGR5-3030	30"	30"
FBLGR5-3630	36"	30"
FBLGR5-4830	48"	30"
FBLGR5-6030	60"	30"
FBLGR5-7230	72"	30"
FBLGR5-8430	84"	30"
FBLGR5-9630	96"	30"



FBLGR5-4824



Lavatory Shelves **AUTOQUOTES**

- 16 GA 300 Series Stainless Steel
- Includes Brackets And Mounting Hardware

Without 4" Rear High Riser

Model #	Shelf Size (LxW)
BHS5166	16" x 5"
BHS5186	18" x 5"
BHS5246	24" x 5"
BHS5366	36" x 5"
BHS5486	48" x 5"

With 4" Rear High Riser

Model #	Shelf Size (LxW)
BHS516R6	16" x 5"
BHS518R6	18" x 5"
BHS524R6	24" x 5"
BHS536R6	36" x 5"
BHS548R6	48" x 5"



BHS5166



BHS516R6

Wall Shelves - 1.5" Rear High Riser

- 18GA 300 Series Stainless Steel
- 1.5" Rear High Riser
- 6', 7', And 8' Wall Shelves Standard w/3 Support Brackets



EWS8-1224



Model #	Length	Width
EWS8-1224	24"	12"
EWS8-1236	36"	12"
EWS8-1248	48"	12"
EWS8-1260	60"	12"
EWS8-1272	72"	12"
EWS8-1284	84"	12"
EWS8-1296	96"	12"

Model #	Length	Width
EWS8-1624	24"	16"
EWS8-1636	36"	16"
EWS8-1648	48"	16"
EWS8-1660	60"	16"
EWS8-1672	72"	16"
EWS8-1684	84"	16"
EWS8-1696	96"	16"

Wall Shelves 1.5" Rear High Riser w/Single Bar Pot Rack

- 18GA 300 Series Stainless Steel
- 1.5" Rear High Riser
- 6', 7', And 8' Wall Shelves Standard w/3 Support Brackets



BHS1260PR

Model #	Length	Width
BHS1236PR	36"	12"
BHS1248PR	48"	12"
BHS1260PR	60"	12"

Microwave Shelves Inverted "V" Front Edge

- 16GA 300 Series Stainless Steel
- Inverted "V" Front Edge
- Electric Cord Cut-Out With Rubber Grommet



EBMS6-2024

Model #	Length	Width
EBMS6-2024	24"	20"
EBMS6-2030	30"	20"

Stallion Pot Racks



- 300 Series Stainless Steel
- Made of 3/16" x 2" Stainless Steel Flat Bar
- All Racks Provided With T-304 Stainless Steel Hooks (See Chart For Quantity Per Size.)



PRW11



PRW21

Single Bar - Wall Mount Pot Racks - PRW1

Model #	Length	#Hooks
PRW11	48"	4
PRW12	60"	5
PRW13	72"	6
PRW14	96"	8
PRW15	120"	10

Double Bar - Wall Mount Pot Racks - PRW2

Model #	Length	#Hooks
PRW21	48"	8
PRW22	60"	10
PRW23	72"	12
PRW24	96"	16
PRW25	120"	20



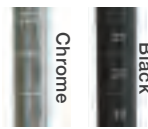
Numbered Posts



Northern Hard Rock Maple



American Black Walnut



Chrome

Black



Mobile Wire Cart

- Available In Northern Hard Rock Maple or American Black Walnut
- 2 Chrome or Black Adjustable Wire Shelves
- 800 lb Per Shelf Capacity Evenly Distributed
- Numbered Posts With 3" Locking Casters
- 36" Overall Height

AUTOQUOTES

Model #	Wood Species	Shelf Size (LxW)	Shelf Color	Top Size (LxWxH)
MET-MWC-1	Maple	24" x 18"	Chrome	27" x 21" x 1-1/2"
MET-MWCK-1	Maple	24" x 18"	Black	27" x 21" x 1-1/2"
MET-MWC-2	Maple	30" x 24"	Chrome	33" x 27" x 1-1/2"
MET-MWCK-2	Maple	30" x 24"	Black	33" x 27" x 1-1/2"
MET-WWC-1	Walnut	24" x 18"	Chrome	27" x 21" x 1-1/2"
MET-WWCK-1	Walnut	24" x 18"	Black	27" x 21" x 1-1/2"
MET-WWC-2	Walnut	30" x 24"	Chrome	33" x 27" x 1-1/2"
MET-WWCK-2	Walnut	30" x 24"	Black	33" x 27" x 1-1/2"

Wire Bussing Cart

- Chrome Wire Cart
- 18" Wide x 36" Long
- 3 Shelves
- Numbered Posts
- Locking Casters w/Bumpers



CWC-1836-3:



Natural Birch Bar Stool

- Constructed Of 1" Square Solid Wood Frame With 14" Diameter Wood Seat

Model #	Height
BSTL18	18"

Black Epoxy Wire Shelving Kit

- Zinc Based Epoxy Coated Shelving Can Be Used In Any Environment
- Includes 10 Year Warranty
- Includes 4 Posts and 4 Shelves
- 800 lbs. Per Shelf Capacity Evenly Distributed
- Note: All Warranty Pro-Rated From Day Of Shipment

Black Epoxy Shelves

Shelf Size (W x L)	66" Tall Posts	74" Tall Posts
14" x 36"	EP-143666-BK	EP-143674-BK
14" x 48"	EP-144866-BK	EP-144874-BK
18" x 36"	EP-183666-BK	EP-183674-BK
18" x 48"	EP-184866-BK	EP-184874-BK
21" x 36"	EP-213666-BK	EP-213674-BK
21" x 48"	EP-214866-BK	EP-214874-BK
24" x 48"	EP-244866-BK	EP-244874-BK





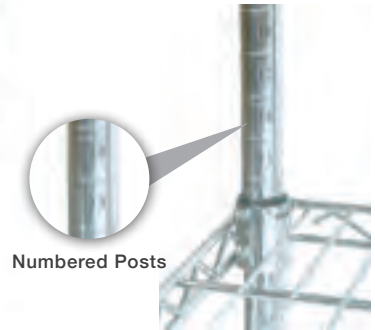
Green Epoxy



Chrome



Chrome
w/Casters



Numbered Posts

Epoxy/Chrome Wire Shelving Only

- Zinc Based Epoxy Coated Shelving Can Be Used In Any Environment - Includes 10 Year Warranty
- Chrome Dry Storage Shelving - 1 Year Warranty
- 800 lbs. Per Shelf Capacity Evenly Distributed
- Note: All Warranty Pro-Rated From Day Of Shipment
- **Wire Shelving Posts Sold Separately On Page 37.**

Wire Shelving - 14" Wide

Shelf Size (W x L)	WT/LB Each	# Shipped Per CTN	Chrome Shelves Model #	Green Epoxy Shelves Model #	Black Epoxy Shelves Model #
14" x 24"	6 lbs	4	CS-1424	EPS-1424-G	EPS-1424-BK
14" x 30"	7 lbs	4	CS-1430	EPS-1430-G	EPS-1430-BK
14" x 36"	8 lbs	4	CS-1436	EPS-1436-G	EPS-1436-BK
14" x 42"	9 lbs	4	CS-1442	EPS-1442-G	EPS-1442-BK
14" x 48"	10 lbs	4	CS-1448	EPS-1448-G	EPS-1448-BK
14" x 54"	11 lbs	4	CS-1454	EPS-1454-G	EPS-1454-BK
14" x 60"	14 lbs	2	CS-1460	EPS-1460-G	EPS-1460-BK
14" x 72"	16 lbs	2	CS-1472	EPS-1472-G	EPS-1472-BK

Wire Shelving - 18" Wide

Shelf Size (W x L)	WT/LB Each	# Shipped Per CTN	Chrome Shelves Model #	Green Epoxy Shelves Model #	Black Epoxy Shelves Model #
18" x 24"	7 lbs	4	CS-1824	EPS-1824-G	EPS-1824-BK
18" x 30"	8 lbs	4	CS-1830	EPS-1830-G	EPS-1830-BK
18" x 36"	9 lbs	4	CS-1836	EPS-1836-G	EPS-1836-BK
18" x 42"	10 lbs	4	CS-1842	EPS-1842-G	EPS-1842-BK
18" x 48"	12 lbs	4	CS-1848	EPS-1848-G	EPS-1848-BK
18" x 54"	14 lbs	2	CS-1854	EPS-1854-G	EPS-1854-BK
18" x 60"	15 lbs	2	CS-1860	EPS-1860-G	EPS-1860-BK
18" x 72"	18 lbs	2	CS-1872	EPS-1872-G	EPS-1872-BK

Wire Shelving - 21" Wide

Shelf Size (W x L)	WT/LB Each	# Shipped Per CTN	Chrome Shelves Model #	Green Epoxy Shelves Model #	Black Epoxy Shelves Model #
21" x 24"	7 lbs	4	CS-2124	EPS-2124-G	EPS-2124-BK
21" x 30"	9 lbs	4	CS-2130	EPS-2130-G	EPS-2130-BK
21" x 36"	10 lbs	4	CS-2136	EPS-2136-G	EPS-2136-BK
21" x 42"	11 lbs	4	CS-2142	EPS-2142-G	EPS-2142-BK
21" x 48"	13 lbs	4	CS-2148	EPS-2148-G	EPS-2148-BK
21" x 54"	15 lbs	2	CS-2154	EPS-2154-G	EPS-2154-BK
21" x 60"	17 lbs	2	CS-2160	EPS-2160-G	EPS-2160-BK
21" x 72"	20 lbs	2	CS-2172	EPS-2172-G	EPS-2172-BK

Wire Shelving - 24" Wide

Shelf Size (W x L)	WT/LB Each	# Shipped Per CTN	Chrome Shelves Model #	Green Epoxy Shelves Model #	Black Epoxy Shelves Model #
24" x 24"	8 lbs	4	CS-2424	EPS-2424-G	EPS-2424-BK
24" x 30"	10 lbs	4	CS-2430	EPS-2430-G	EPS-2430-BK
24" x 36"	12 lbs	4	CS-2436	EPS-2436-G	EPS-2436-BK
24" x 42"	14 lbs	4	CS-2442	EPS-2442-G	EPS-2442-BK
24" x 48"	15 lbs	4	CS-2448	EPS-2448-G	EPS-2448-BK
24" x 54"	18 lbs	2	CS-2454	EPS-2454-G	EPS-2454-BK
24" x 60"	18 lbs	2	CS-2460	EPS-2460-G	EPS-2460-BK
24" x 72"	24 lbs	2	CS-2472	EPS-2472-G	EPS-2472-BK

Epoxy/Chrome Posts



• Wire Shelving Sold Separately On Page 36.

Chrome Post

Green Epoxy Post

Black Epoxy Post



Post Size	WT/LB Each	# Shipped Per CTN	Chrome Posts Model #	Green Epoxy Posts Model #	Black Epoxy Posts Model #
13"	1	4	CP-13	EPP-13-G	EPP-13-BK
33"	4	4	CP-33	EPP-33-G	EPP-33-BK
54"	4	4	CP-54	EPP-54-G	EPP-54-BK
66"	4	4	CP-66	EPP-66-G	EPP-66-BK
74"	5	4	CP-74	EPP-74-G	EPP-74-BK
86"	6	4	CP-86	EPP-86-G	EPP-86-BK

Wire Shelving Wall Brackets

• Wire Shelving Sold Separately On Page 36

Model #	Description	Depth
CSWB-14-S	Chrome/Single	14"
CSWB-18-S	Chrome/Single	18"



Wire Shelf Sold Separately

CSWB-14-S



Chrome & Epoxy Ledges

Chrome Ledge Model #	Epoxy Ledge Model #	Length
CS-L24	EPS-L24-G/B	24"
CS-L36	EPS-L36-G/B	36"
CS-L48	EPS-L48-G/B	48"
CS-L60	EPS-L60-G/B	60"
CS-L72	EPS-L72-G/B	72"

Chrome & Epoxy Dividers

Chrome Dividers Model #	Epoxy Dividers Model #	Length
CS-D14	EPS-D14-G/B	14"
CS-D18	EPS-D18-G/B	18"
CS-D21	EPS-D21-G/B	21"
CS-D24	EPS-D24-G/B	24"



S-Hooks

Model #
SHKS-2
(Set of 2)



Locking Casters w/Bumpers

Model #
CASWS05-4
(Set of 4)



SPRFSF0215

Dining Tops (Call For Dining Top Quotes)

Species (Available In Standard or Blended Tops.)



Northern Hard Rock Maple



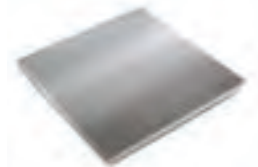
American Cherry



American Black Walnut



Appalachian Red Oak (Comes in natural or stained.)



Stainless Steel

Stains (For Appalachian Red Oak Only)



Sherwood



Walnut



Century



Mahogany

Edge Details



Standard 1/4" Radius



Optional Double 1/4" Radius

Top Shapes



Round



Square



Rectangular



Oval



Four Corner Drop Leaf



Octagonal

Black Metal Table Bases

- Dining Height Table Bases Stand 28" To The Top Of The Spider
- Bar Height Table Bases Stand 40.5" To The Top Of The Spider
- Call Factory For Dining Top Quotes

Dining Height

Model #	Recommended Top Size	Base Spread	Spider Size	Weight
1917B	24" - 30"	18" dia.	13"	26 lbs
1922B	36" - 42" or 30" - 42"	22" dia.	13"	35 lbs
1930B	48" - 60"	30" dia.	15"	50 lbs
2015B	24" - 30"	22" x 22"	13"	19 lbs
2025B	36" - 42"	30" x 30"	13"	22 lbs
2065B	48" - 96" (set of 2)	22" x 5"	13"	30 lbs
2065B3	120" - 144" (set of 3)	22" x 5"	13"	45 lbs
2099B	Oblong	24" x 30"	13"	21 lbs

Bar Height

Model #	Recommended Top Size	Base Spread	Spider Size	Weight
1917B40	24" - 30"	18" dia.	13"	26 lbs
1922B40	36" - 42" or 30" - 42"	22" dia.	13"	35 lbs
1930B40	48" - 60"	30" dia.	15"	50 lbs
2015B40	24" - 30"	22" x 22"	13"	19 lbs
2025B40	36" - 42"	30" x 30"	13"	22 lbs
2065B40	48" - 96" (set of 2)	22" x 5"	13"	30 lbs
2065B340	120" - 144" (set of 3)	22" x 5"	13"	45 lbs
2099B40	Oblong	24" x 30"	13"	21 lbs



Caution: Freight Claims

Before accepting any shipment, examine it carefully and note any damage or shortage on the Freight Bill before signing for delivery. All claims for shortage or damage must be filed with the carrier. Title passes from John Boos & Co. to the purchaser at point of origin of shipment. If, after receipt of shipment, concealed damage is discovered, immediately notify the delivering carrier requesting immediate inspection. The inspection report should be used to support your claims against the carrier.

Return Shipments

We will not accept any returned merchandise unless written authorization has been issued. Any claims for defective materials or workmanship should be mailed to the factory.

For return of UNUSED merchandise in A-1 condition - there is a 25% or greater restocking charge for AUTHORIZED returns. John Boos & Co. reserves the right to deny returned merchandise.

Warranty

The only warranty, expressed or implied, is a 1-year guarantee against defect in workmanship and material.

This warranty does not apply to damages which may result from neglect, accidental or intentional damaged, damage or wear to any swivel mechanism, normal wear and tear, misuse of product, unauthorized repair, exposure to extremes in temperature and humidity, and alteration or abuse of the product. Wood products ordered "unfinished" do not come with a warranty.

Factory obligation under this warranty, is limited, at the option of John Boos & Co. to repair or replacement of the product (or one of equal type and quality if the product is no longer available), within 90 days after the receipt of written recommendation from the dealer, provided none of the above exceptions are evident.

John Boos & Co. shall not be liable for any loss or damage arising from use, or for consequential damages. This warranty gives certain legal rights and there may be other rights that vary from state to state.

Freight Program

- Free Freight for mixed stainless steel flyer items on order of \$3,500.00 net or more Shipments Continental U.S.A. only
- Wire Shelving Freight Program:
 - Free freight on minimum wire shelving orders of \$1,500.00 or more
 - Maximum freight charge on wire shelving orders less than \$1,500.00 will not exceed \$150.00
 - Wire shelving will ride free with minimum order of \$3,500.00 stainless steel promotional flyer product
- 14 days for concealed damage - retain original package
- Price F.O.B. Factory
- Product subject to item availability
- 2-3 week lead time for fabricated product not in inventory on standard work tables and dish tables (E-Series not included)
- Flyer subject to change without notice
- No modifications to flyer product
- All Prices Dealer Net



www.facebook.com/johnboosco



**John
BOOS**
Since 1887

P.O. Box 609
3601 S. Banker St.
Effingham, IL 62401
www.johnboos.com
Ph: 888-431-2667 Fax: 800-433-2667
CHANGE SERVICE REQUESTED

Mobile Handwash Sink

- 16GA Stainless Steel Top & Panels
- 20GA Stainless Steel Hinged Door w/Magnetic Catches
- Marine Inverted "V" Front Edge
- 8" Rear Risers & Side Splashes
- Drop-In Sink
- Deck Mount Faucet 4" O.C.
- Deck Mount Soap Dispenser
- Paper Towel Dispenser
- Heavy Duty 5" Locking Casters
- Shurflo Fresh Water Pump
- Ariston GL2.5 Water Heater
- CPS 5 GAL Clean Water Container
- CPS 6 GAL Grey Water Container
- GFI Outlet With 8 Foot Cord
- All Components are UL Listed



NEW

Model #	Sink Bowl Size (L x W x D)	Length	Width	Overall Work Height
MHS-2624	10" x 14" x 5"	26"	24"	36"